



Summary Phase 2 Draft EIS Public Hearings

Newcastle & Renton • Oliver Hazen High School • May 23, 2017 • 6:00 – 8:30 pm
Bellevue • Bellevue City Hall • May 25, 2017 • 6:00 – 9:00 pm
Redmond & Kirkland • Rose Hill Elementary School • June 3, 2017 • 2:00 – 4:30 pm

Introduction

During the public comment period on the Phase 2 Draft EIS (Environmental Impact Statement) on the Energize Eastside project proposed by Puget Sound Energy (PSE), the City of Bellevue (and Partner Cities) hosted a series of three public hearings. Each hearing began with an open house providing the opportunity to learn more about PSE's proposed project and potential impacts associated with its construction and operation. During the oral comment portion of each event some participants provided oral comments. People could also provide comments without attending a meeting by submitting them via mail, email, or on the project website throughout the Phase 2 Draft EIS comment period, which began on May 8, 2017 and ended on July 6, 2017. Initially, the comment period was scheduled for 45 days (ending on June 21st), but the comment period was extended to last 60 days (ending on July 6th) in response to a request from a citizen group.

The expanded comment period of 60 days provided an opportunity for agencies, Tribes, and members of the public to comment on the adequacy of the Phase 2 Draft EIS, possible adverse impacts, potential mitigation measures and areas that warrant additional study. The information presented at all of the meetings was the same. Hearing materials were posted to the project website on May 22, the day before the first public hearing. Hearing materials are provided in the appendices attached to this summary. Appendix I includes notification materials and Appendix II includes the agenda, exhibits and handout.

The Phase 2 Draft EIS evaluated the potential environmental impacts of project alternatives proposed to address PSE's identified project need and objectives. This project-level evaluation was intended to provide decision makers and community members with a better understanding of what constructing and operating a new substation and transmission lines along various proposed alternative routes would mean to the community. In addition to assessing potential environmental impacts in the short-term (during construction), over the long-term (during operation) and cumulatively, the Phase 2 Draft EIS identified potential mitigation measures for significant unavoidable impacts.

Phase 2 Draft EIS Notification

Notification of the release of the Phase 2 Draft EIS, 60-day comment period and dates, times, and locations of the public hearings was distributed via project signs installed along key roadways, legal notices, display ads, postal mail, email, social media and websites as outlined below.

DATE	NOTIFICATION	DISTRIBUTION
May 4, 2017	Project signs announcing public hearings and comment period	Installed along 26 arterial roads in the cities of Bellevue, Newcastle and Renton
May 4, 2017	Courtesy Mailing	Newcastle residents around the proposed alignment
May 4, 2017	Legal notice	Placed in City of Bellevue's Weekly Permit Bulletin, in the Ecology SEPA register
May 4, 2017	Legal notice	Sent via email and postal mail to the official SEPA mailing lists of Partner Cities, and also to the Energize Eastside EIS parties of record and interested parties
May 4, 2017	Legal notice	Placed in the Seattle Times — newspaper of record for the cities of Bellevue, Kirkland, Newcastle, and Redmond
May 5, 2017	Legal notice	Placed in the Renton Reporter — newspaper of record for the City of Renton
May 8, 2017	Notice of availability	Sent via email and postal mail to the official SEPA mailing lists of Partner Cities, and also to the Energize Eastside EIS parties of record and interested parties
May 8, 2017	Hard copies of Draft EIS	Available at public facilities in each Partner City
May 8, 2017	Official notice of availability	Posted on EnergizeEastsideEIS.org
May 12, 2017	News release announcing public hearings and comment period	Distributed to media outlets on list managed by City of Bellevue Communications Office
May 12, 2017	Website article announcing public hearings and comment period	Posted on City of Bellevue City News page
May 12, 2017	Announcement of public hearings and comment period	Posted on City of Bellevue Twitter feed
May 15, 2017	Announcement of public hearings and comment period	Posted on Nextdoor social media platform
May 18 and 25, 2017	Display advertisement announcing public hearings and comment period	Placed in the Seattle Times
May 19, 2017	Display advertisement announcing public hearings and comment period	Placed in the Bellevue Reporter, Kirkland Reporter, Redmond Reporter, and Renton Reporter
May 24, 2017	Reminder announcement of public hearings and comment period	Posted on Facebook, Twitter and Nextdoor social media platforms
June 19, 2017	Announcement of comment period extension to July 6, 2017	Posted on Facebook, Twitter and Nextdoor social media platforms; Sent via email to the official SEPA mailing lists of Partner Cities, and also to the Energize Eastside EIS parties of record and interested parties
June 22, 2017	Announcement of comment period extension to July 6, 2017	Sent via postal mail; Courtesy mailing to Newcastle residents around the proposed alignment. Placed in City of Bellevue's Weekly Permit Bulletin, in the Ecology SEPA register; Placed in the Seattle Times

Hearing Overview

Each meeting began with a 30-minute open house. Exhibits provided an overview of the proposal and EIS process with schedule, an explanation of the State Environmental Protection Act (SEPA) review process, descriptions of the proposed alternative alignments and new substation and highlights from select portions of the environmental analysis, including two charts comparing the relative impacts of the route options in central and south Bellevue for each element of the environment. Upon arrival, attendees were offered a comment form and handout explaining the anticipated land use permits required from each jurisdiction in which the Energize Eastside project is proposed to be built. City staff and their consultants were available to respond to questions from attendees. PSE representatives staffed a table with exhibits and materials explaining PSE's stated need and proposed solution. Members of CENSE, the Coalition of Eastside Neighborhoods for Sensible Energy, also displayed exhibits and distributed printed materials

The informational exhibits addressed the following topics, organized by station.

Sign-in Table

- Welcome + Agenda

Station 1: Project Overview

- What is the Energize Eastside EIS?
- Phased Review Process/Schedule

Station 2: SEPA Review

- What is an EIS?
- What is the Phase 2 Draft EIS?

Station 3: The Alternatives

- No-Action Alternative
- Alternative 1: Redmond Segment
- Alternative 1: Bellevue North Segment
- Alternative 1: Bellevue Central Segment — Existing Corridor Option
- Alternative 1: Bellevue Central Segment — Bypass Option 1
- Alternative 1: Bellevue Central Segment — Bypass Option 2
- Alternative 1: Richards Creek Substation
- Alternative 1: Bellevue South Segment — Oak 1 Option
- Alternative 1: Bellevue South Segment — Oak 2 Option
- Alternative 1: Bellevue South Segment — Willow 1 Option
- Alternative 1: Bellevue South Segment — Willow 2 Option
- Alternative 1: Newcastle Segment
- Alternative 1: Renton Segment

Station 5: Highlights of Potential Impacts

- Comparison of Impacts during Operation — Bellevue Central Options
- Comparison of Impacts during Operation — Bellevue South Options
- Public Health and Safety
- Scenic Views and the Aesthetic Environment
- Historic and Cultural Resources

- Parks and Recreation
- Tree Canopy

After the open house, the formal hearing portion of the event began with a short presentation on project overview and the purpose of the hearing. During the formal hearing, attendees were able to provide comments verbally to the City of Bellevue SEPA Official, Carol Helland. The order of individuals who signed-up to testify was randomly selected, beginning with representatives of non-profit or community organizations and then moving on to individuals. To ensure all who wanted to speak were given the opportunity, those representing non-profit or community organizations were allocated 5 minutes each and individuals were allocated 3 minutes. In cases where speakers were not yet finished when their allotted time expired, all were encouraged to briefly conclude their comments. Some were allowed considerable time to conclude their comments and some were invited to speak more than once after all others who wanted to speak had the opportunity. In order to ensure the court reporter could hear the speakers, clapping was discouraged while speakers were commenting. To show support and appreciation to those giving testimony, participants raised and waved their hands and clapped.

Meeting attendees were also offered the opportunity to provide their comments during the event by completing a paper comment form or by providing comments through a web-based form located at EnergizeEastsideEIS.org. To facilitate this option, two internet-connected computers were available at each meeting for public use.

Meeting Characteristics

People arrived at each meeting early. Some of the participants spent considerable time viewing the open house exhibits and talking with staff; others spent the time talking amongst themselves and preparing to testify. Many of the same people attended and testified at multiple meetings. Many of the attendees at the meetings wore orange clothing to show support of CENSE, the Coalition of Eastside Neighborhoods for Sensible Energy. Participation at each meeting was as follows:

Newcastle/Renton	22 sign-ins	~30 attendees
Bellevue	44 sign-ins	~50 attendees
Redmond/Kirkland	14 sign-ins	~20 attendees

Public Hearing Testimony Highlights

Public comments most frequently provided at the three hearings are summarized below.

Need for the Project

- Needs analysis conducted by PSE based on improbable scenario that is not verifiable due to limited third-party access to data upon which forecast is based
- Desire for further independent analysis of need
- Potential for demand-side reductions and battery storage facilities to address the need
- Recent trends showing reduction in per capita consumption offsetting growth to yield no increase in demand
- Questioning of PSE’s motivation for building the project, suggesting it is motivated by profit rather than needs of the region

Alternatives

- Alternatives not adequately defined
- Lack of specific pole locations and specific trees that would be removed
- No Action Alternative not adequately evaluated

- Lack of genuine alternative to project proposed by PSE
- Support for the No Action Alternative
- Flow control (demand response) and grid batteries constitute (unexamined) alternative properly scaled to stated need
- Opposition to Alternative 1

Proposed Route Alignment Concerns & Questions

- Potential to be co-located in existing Seattle City Light transmission corridor
- Mitigation or compensation for negative impacts on adjacent home owners
- Lack of detailed cost/benefit analysis for installing transmission line underground

Process Concerns

- Unwillingness of PSE to provide data used to define need despite obtaining proper authorization
- Reliance on PSE data and subject matter experts in Phase 2 Draft EIS
- Consultants conducting analysis not impartial—have vested interest in supporting PSE proposal for future business opportunities
- Not enough time for public to review massive P2 DEIS
- Additional data needed to adequately comment on P2 DEIS (i.e. specific pole and tree locations)
- Failure to use data provided by CENSE subject matter experts
- Questions about whether comments submitted earlier in the process needed to be resubmitted and when they would be responded to
- EIS seems like a process to sell the project
- Requests for a Supplemental EIS

Financial Concerns

- Economic impact assessment incomplete or insufficient, especially regarding property values, road repair, vegetation clearing, wetland loss and replacement, etc.
- Compensation should be made to property owners for loss of trees
- Risk to life and property falls on adjacent property owners

Environmental Concerns

- Loss of too many trees
- Impacts of PSE's vegetation management strategy not analyzed
- Impacts on environmentally sensitive areas, including steep slopes, aquifers, streams, and wetlands

Long-term Community Impacts

- Project is inconsistent with Bellevue's vision to be a green and smart community
- Industrial utility corridor through residential neighborhood
- Reduction in property values
- Demolition of facilities, loss of cellular equipment lease revenue and construction during summer months could bankrupt non-profit Somerset Recreation Club

Public Health & Safety

- Safety of building electrical infrastructure in the same corridor as 50-year-old Olympic Pipeline running perpendicular to earthquake fault line—explosions and fires would likely result if a major earthquake occur
- The shape and size of a pipeline fire in the EIS are misleading and too small
- Safety of co-locating electrical infrastructure with pipeline carrying high-pressure leaded jet fuel

- Inadequate assessment of pipeline corrosion potential where proposed transmission lines would cross Seattle City Light transmission lines
- Use of triangulation to reduce EMF exposure not feasible
- Ability of tall poles to withstand earthquakes and severe weather
- Potential for undetected pipeline damage during excavation for pole foundations
- Inability of emergency responders to do more than evacuate those in danger if pipeline fire occurs
- Inadequacy of DEIS to address all potential issues related to pipeline safety
- PSE's preferred option for Bellevue South Segment—Willow 2—violates safety standards



Appendix I Notification Materials

NOTICE OF AVAILABILITY OF PHASE 2 DRAFT ENVIRONMENTAL IMPACT STATEMENT (EIS)

NOTICE OF PUBLIC HEARINGS/OPEN HOUSES

Project Name: Energize Eastside

Project Proponent: Puget Sound Energy (PSE)

Location: Portions of Bellevue, Newcastle, Redmond, Renton, and unincorporated King County between the Sammamish Substation at 9221 Willow Road NE, Redmond, WA 98052, and the Talbot Hill Substation at 2400 South Puget Drive, Renton, WA 98055.

City of Bellevue EIS File Number: 14-139122-LE

Description: Construct approximately 18 miles of new 230 kilovolt (kV) electrical transmission lines and a new substation (Richards Creek in Bellevue) connecting two existing bulk energy systems (one to the north in Redmond and one to the south in Renton) to supply future electrical capacity and improve electrical grid reliability for Eastside communities. Project details and plans are available in the project file and on the project website at www.EnergizeEastsideEIS.org.

EIS Required: On April 30, 2015, the Environmental Coordinator of the City of Bellevue, serving as lead agency, published a Notice of Determination of Significance, indicating that this proposal could have a significant adverse impact upon the environment and required preparation of an Environmental Impact Statement (EIS) under Revised Code of Washington (RCW) 43.21C.030(2)(c). On January 28, 2016 the Lead Agency issued the Phase 1 Programmatic Draft EIS, which evaluated alternative methods to achieve PSE's project objectives. A Phase 2 Draft EIS has been completed and evaluates project-level alternatives.

Approvals Required: Local permit review and approval within each affected jurisdiction.

Availability of the Draft EIS: The Draft EIS may be viewed online or downloaded from the project website www.EnergizeEastsideEIS.org. Copies of the EIS on CD are available at no charge. Printed copies are available to purchase for cost of reproduction (\$300). Email info@EnergizeEastsideEIS.org for more information.

SEPA EIS Public Comment: Agencies, affected tribes, and members of the public are invited to comment on the Phase 2 Draft EIS which will be available on May 8, 2017. You may comment on alternatives, mitigation measures, probable significant adverse impacts, and permits or other approvals that may be required. An extended comment period of 45 days is being provided pursuant to Washington Administrative Code (WAC) 197-11-455, and will include three public hearings at the times and locations listed below.

Public Hearings/Open House Dates, Times, and Locations

Tuesday, May 23, 2017 6:00 - 8:30 PM: Oliver Hazen High School - 1101 Hoquiam Ave NE, Renton, WA 98059

Thursday, May 25, 2017 6:00 - 9:00 PM: Bellevue City Hall - 450 110th Ave NE, Bellevue, WA 98004

Saturday, June 3, 2017 2:00 - 4:30 PM: Rose Hill Elementary - 8110 128th Ave NE, Kirkland, WA 98033

Public Comment Period: The comment period opens May 8, 2017. The deadline for submitting comments is Wednesday, June 21, 2017. All comments related to the Draft EIS must be received by this date. Mailed items that are postmarked by Wednesday, June 21, 2017 will be accepted. Comments may be submitted orally at the public hearings or in writing. A valid physical mailing address is required to establish status as an official party of record.

Written comments may be submitted

Online at www.EnergizeEastsideEIS.org

By email to info@EnergizeEastsideEIS.org

By mail to:

City of Bellevue

Development Services Department

Attn: Heidi Bedwell, Environmental Planning Manager

P.O. Box 90012

Bellevue, WA 98009-9012

Applicant Contact: Bradley Strauch, Puget Sound Energy

Applicant Contact Email: bradley.strauch@pse.com

Lead Agency Contact: Heidi Bedwell, City of Bellevue

Lead Agency Contact Phone: 425-452-4862

Lead Agency Contact Email: hbedwell@bellevuewa.gov

NOTICE OF EXTENDED COMMENT PERIOD FOR THE ENERGIZE EASTSIDE PHASE 2 DRAFT ENVIRONMENTAL IMPACT STATEMENT (DEIS)

Project Name: Energize Eastside

<http://www.energizeeastsideeis.org/library.html#phase2deis>

Project Proponent: Puget Sound Energy

Location: Portions of Bellevue, Newcastle, Redmond, Renton, and unincorporated King County between the Sammamish Substation at 9221 Willows Road NE, Redmond, WA 98052, and the Talbot Hill Substation at 2400 South Puget Drive, Renton, WA 98055.

City of Bellevue EIS File Number: 14-139122-LE

Project Description: Construct approximately 18 miles of new 230 kilovolt (kV) electrical transmission lines and add a new substation (Richards Creek) at the Lakeside substation in Bellevue to connect two existing bulk energy systems (one to the north in Redmond and one to the south in Renton), supply future electrical capacity, and improve electrical grid reliability for Eastside communities. Project details and plans are available in the project file and on the project website at www.EnergizeEastsideEIS.org.

PUBLIC COMMENT PERIOD EXTENDED: The comment period began on May 8, 2017 and was originally scheduled to end on June 21, 2017. The deadline for submitting comments is extended 15 days to **July 6, 2017**. All comments related to the Draft EIS must be received by this date. Mailed items that are postmarked by Thursday, **July 6, 2017** will be accepted. A valid physical mailing address is required to establish status as an official party of record. Written comments may be submitted:

Online at: www.EnergizeEastsideEIS.org

By email to: Info@EnergizeEastsideEIS.org

By mail to:

City of Bellevue

Development Services Department

Attn: Heidi Bedwell, Environmental Planning Manager

P.O. Box 90012

Bellevue, WA 98009-9012

EIS Required: On April 30, 2015, the Environmental Coordinator for the City of Bellevue, serving as lead agency, published a Notice of Determination of Significance, indicating that this proposal could have a significant adverse impact on the environment and required preparation of an Environmental Impact Statement (EIS) under Revised Code of Washington (RCW) 43.21C.030(2)(c). On January 28, 2016, the lead agency issued a Phase 1 Programmatic Draft EIS, which evaluated alternative methods to achieve PSE's project objectives. A Phase 2 Draft EIS has been prepared to analyze PSE's proposal and alternatives proposed by PSE. The EIS is not a permit - it is one of many sets of information permitting agencies will consider as they decide whether to approve the project and issue necessary permits.

Approvals required: Local permit review and approval within each affected jurisdiction. The Energize Eastside EIS is not a permit - it is one of many sets of information permitting agencies will consider as they decide whether to approve the project and issue necessary permits.

Draft EIS Available: Accessible online at www.EnergizeEastsideEIS.org.

Printed copies are available for review at the following libraries:

Redmond Library, 15990 NE 85th St., Redmond, WA, 98052

Newport Way Library, 14250 SE Newport Way, Bellevue, WA 98006

Lake Hills Library, 15590 Lake Hills Blvd., Bellevue, WA 98007
Newcastle Library, 12901 Newcastle Way, Newcastle, WA 98056
Bellevue Library, 1111 110th Ave. NE, Bellevue, WA 98004
Renton Library, 100 Mill Ave S., Renton, WA 98057
Renton Highlands Library, 2801 NE 10th St., Renton, 98056

Copies of the document are also available for review at the following city offices:

City of Bellevue Development Services Department, City Hall, 450 110th Ave NE, Bellevue, WA 98004
City of Renton Planning Division, 1055 South Grady Way, Renton, WA 98057
City of Redmond Planning and Community Development, City Hall, 15670 NE 85th St
Redmond, WA 98052
City of Newcastle Planning Division, City Hall,
12835 Newcastle Way, Suite 200, Newcastle, WA, 98056

Electronic copies of the EIS (Adobe PDF) on compact disk may be obtained free of charge at the following City offices (addresses above): Bellevue, Newcastle, Redmond, and Renton.

Printed copies of the EIS may be ordered and purchased by contacting Info@EnergizeEastsideEIS.org

Applicant Contact: Bradley Strauch, Puget Sound Energy
Applicant Contact Email: bradley.strauch@pse.com
Lead Agency Contact: Heidi M. Bedwell, City of Bellevue
Lead Agency Contact Phone: 425-452-4862
Lead Agency Contact Email: hbedwell@bellevuewa.gov



DEVELOPMENT SERVICES DEPARTMENT
ENVIRONMENTAL COORDINATOR
450 110th Ave NE
BELLEVUE, WA 98009-9012

NOTICE OF AVAILABILITY OF PHASE 2 DRAFT ENVIRONMENTAL IMPACT STATEMENT (EIS)

NOTICE OF PUBLIC HEARINGS/OPEN HOUSES

PROJECT NAME: Energize Eastside

PROPONENT: Bradley Strauch, Puget Sound Energy (PSE)

LOCATION OF PROPOSAL: Portions of Bellevue, Newcastle, Redmond, Renton, and unincorporated King County between the Sammamish Substation at 9221 Willows Road NE, Redmond, WA 98052, and the Talbot Hill Substation at 2400 South Puget Drive, Renton, WA 98055.

DESCRIPTION OF PROPOSAL: Construct approximately 18 miles of new 230 kilovolt (kV) electrical transmission lines and add a new substation (Richards Creek) at the Lakeside substation in Bellevue to connect two existing bulk energy systems (one to the north in Redmond and one to the south in Renton), supply future electrical capacity, and improve electrical grid reliability for Eastside communities. Project details and plans are available in the project file and on the project website at www.EnergizeEastsideEIS.org.

FILE NUMBER: 14-139122-LE

PROJECT PLANNER: Heidi Bedwell

EIS REQUIRED: On April 30, 2015, the Environmental Coordinator for the City of Bellevue, serving as lead agency, published a Notice of Determination of Significance, indicating that this proposal could have a significant adverse impact on the environment and required preparation of an Environmental Impact Statement (EIS) under Revised Code of Washington (RCW) 43.21C.030(2)(c). On January 28, 2016, the lead agency issued a Phase 1 Programmatic Draft EIS, which evaluated alternative methods to achieve PSE's project objectives. A Phase 2 Draft EIS has been prepared to analyze PSE's proposal and alternatives proposed by PSE. The EIS is not a permit - it is one of many sets of information permitting agencies will consider as they decide whether to approve the project and issue necessary permits.

AVAILABILITY OF THE DRAFT EIS: The Draft EIS may be viewed online or downloaded from the project website www.EnergizeEastsideEIS.org. Copies of the EIS on CD are available at no charge. Printed copies are available to purchase for cost of reproduction (\$300). Email info@EnergizeEastsideEIS.org for more information.

PUBLIC COMMENT: Agencies, affected tribes, and members of the public are invited to comment on the Phase 2 Draft EIS which will be available on May 8, 2017. You may comment on alternatives, mitigation measures, probable significant adverse impacts, and permits or other approvals that may be required. An extended comment period of 45 days is being provided pursuant to Washington Administrative Code (WAC) 197-11-455, and will include three public hearings at the times and locations listed below.

PUBLIC HEARING/OPEN HOUSE DATES, TIMES, AND LOCATIONS:

Tuesday, May 23, 2017 6:00 – 8:30 PM: Oliver Hazen High School - 1101 Hoquiam Ave NE, Renton, WA 98059
Thursday, May 25, 2017 6:00 – 9:00 PM: Bellevue City Hall - 450 110th Ave NE, Bellevue, WA 98004
Saturday, June 3, 2017 2:00 – 4:30 PM: Rose Hill Elementary - 8110 128th Ave NE, Kirkland, WA 98033

Comments may be submitted orally at the public hearings or in writing. Written comments may be submitted:

Online at: www.EnergizeEastsideEIS.org

By email to: Info@EnergizeEastsideEIS.org

By mail to:

City of Bellevue
Development Services Department
Attn: Heidi Bedwell, Environmental Planning Manager
P.O. Box 90012
Bellevue, WA 98009-9012

For questions about public hearings or commenting, email info@EnergizeEastsideEIS.org or contact: Heidi Bedwell, Environmental Planning Manager/Energize Eastside EIS Program Manager, City of Bellevue Development Services Department, 425-452-4862.

PUBLIC COMMENT PERIOD: The comment period opens May 8, 2017. The deadline for submitting comments is Wednesday, June 21, 2017. All comments related to the Draft EIS must be received by this date. Mailed items that are postmarked by Wednesday, June 21, 2017 will be accepted. Comments may be submitted orally at the public hearings or in writing. A valid physical mailing address is required to establish status as an official party of record.

LEAD AGENCY: The City of Bellevue is the SEPA lead agency under WAC 197-11-932, and issued a letter of lead agency status to the Partner Cities (Kirkland, Newcastle, Redmond, and Renton) on September 15, 2014. Bellevue is the nominal lead and each Partner City is a co-lead agency for the proposal as permitted pursuant to WAC 197-11-944.

PHASED REVIEW: The Phase 1 Programmatic Draft EIS was completed and subject to public comment. Under WAC 197-11-060(5) the purpose of the Phase 1 Draft EIS is to evaluate, at a more general level, the environmental impacts of alternative methods to address the electrical transmission capacity deficiency identified by PSE. The Phase 2 Draft EIS has been completed and evaluates project-level alternatives, as described below.

EIS ALTERNATIVE REQUIREMENTS: WAC 197-11-440(5)(b) states that a reasonable alternative means an action that could feasibly attain or approximate a proposal's objectives, but at a lower environmental cost or decreased level of environmental degradation. Reasonable alternatives may be those over which an agency with jurisdiction has authority to control impacts, either directly or indirectly through requirement of mitigation measures.

Following receipt and consideration of public comment on the Phase 2 Draft EIS, a Final EIS will be issued that incorporates the information from both the Phase 1 and Phase 2 Draft EISs.

ALTERNATIVES: Descriptions of the alternatives analyzed in the Phase 2 Draft EIS follow:

No Action

This alternative is required under SEPA as a baseline against which the action alternatives can be compared. Under this alternative, maintenance, conservation, and certain other activities that do not require state or local government approvals could continue. No new 230 kV line or substation would be built.

Action Alternatives (PSE's Proposal and Alternatives)

New Substation at Lakeside (Richards Creek) and New 230 kV Transmission Lines

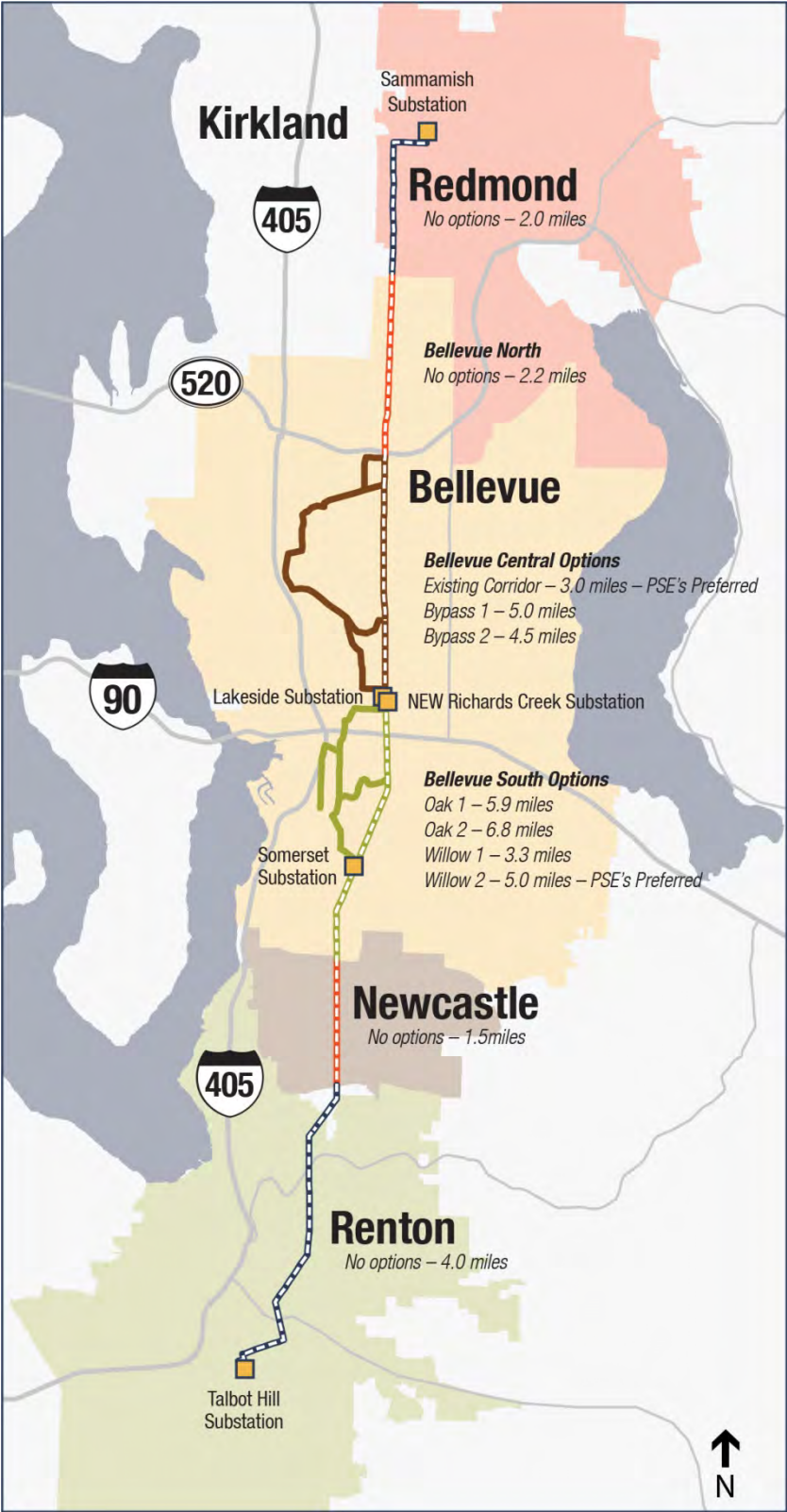
PSE has proposed to route new 230 kV transmission line, to the extent feasible, within PSE's existing Sammamish-Lakeside-Talbot Hill 115 kV transmission line corridor. At the existing Lakeside distribution substation (13615 SE 26th St in Bellevue) a new substation (Richards Creek) would be developed on the vacant parcels to the south (parcel numbers 102405-9083 and 102405-9130) to accommodate a new 230 kV transformer and associated electrical equipment.

For the Phase 2 Draft EIS, the proposed transmission line corridor is divided into six segments (Redmond, Bellevue North, Bellevue Central, Bellevue South, Newcastle, and Renton segments) with alternative alignments applying to two segments (Bellevue Central and Bellevue South segments). PSE has proposed three alternative alignments for the Bellevue Central segment and four alternative alignments for the Bellevue South segment. PSE has not identified alternative alignments for the other four segments. See attached figure for a map that delineates the six segments and alternative alignments.

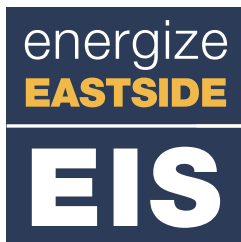
The Olympic Pipeline is located adjacent to the transmission line in some segments along the corridor. None of the alternatives proposed by PSE require widening of the existing electrical transmission corridor easement. Additional easements may be necessary along alternative alignments located outside of the

existing corridor. Vegetation clearing for both the construction and maintenance of the proposed transmission line is necessary and varies based on segment. The following table presents transmission line alignment lengths, common pole types, and typical pole heights by segment and alternative alignment.

Segment	Approximate length of new transmission lines	Most common pole type	Typical pole height
Redmond	2 miles (all within existing corridor)	Double-circuit steel monopoles	95 feet
Bellevue North	2.2 miles (all within existing corridor)	Double-circuit steel monopoles	95 feet
Bellevue Central	2.8 to 4.5 miles depending on option	<i>Existing Corridor Option</i> Double-circuit steel monopoles <i>Alternative Alignment Options</i> Single-circuit steel monopoles and double-circuit steel monopoles	<i>Existing Corridor Option</i> 95 feet <i>Alternative Alignment Options</i> 90 to 100 feet depending on pole type
Bellevue South	3.3 to 6.7 miles depending on option	<i>Existing Corridor Option</i> Pairs of single-circuit monopoles, double-circuit steel monopoles <i>Alternative Alignment Options</i> Double-circuit steel monopoles, pairs of single-circuit monopoles, and single-circuit H-frames	<i>Existing Corridor Option</i> 85 to 100 feet depending on pole type <i>Alternative Alignment Options</i> 65 to 100 feet depending on pole type
Newcastle	1.5 miles (all within existing corridor)	Pairs of single-circuit monopoles	100 feet
Renton	4.5 miles (all within existing corridor)	Double-circuit steel monopoles	90 feet



Phase 2 Draft EIS Hearings



Environmental Impact Statement

Draft EIS Available May 8, 2017
Comment Period Ends July 6, 2017

NEWCASTLE + RENTON

Oliver Hazen High Tue 5/23 • 6–8:30 PM

BELLEVUE

Bellevue City Hall Thu 5/25 • 6–9:00 PM

REDMOND

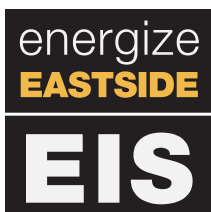
Rose Hill Elementary Sat 6/3 • 2–4:30 PM



Environmental review of a new electrical transmission line and substation

EnergizeEastsideEIS.org

Phase 2 Draft EIS Public Hearings



Environmental Impact Statement

Meetings will begin with a 30-minute open house followed by a 15-minute presentation and a public comment period. The order of speakers will be chosen at random.

The information presented at all of the public hearings will be the same. You do not need to attend all public hearings for your comments to be heard. Attendance is optional—you can provide comments without attending a public hearing.

NEWCASTLE + RENTON

Tuesday 5/23 Oliver Hazen High
6:00–8:30 PM 1101 Hoquiam Ave NE, Renton

BELLEVUE

Thursday 5/25 Bellevue City Hall
6:00–9:00 PM 450–110th Ave NE, Bellevue

REDMOND

Saturday 6/3 Rose Hill Elementary
2:00–4:30 PM 8110–128th Ave NE, Kirkland



Public Comment Period ends June 21, 2017

Energize Eastside EIS is an evaluation of potential significant environmental impacts associated with PSE's proposal to build a new electric substation and approximately 18 miles of high capacity transmission lines from Renton to Redmond. PSE's proposed project is intended to address an electrical transmission capacity deficiency and improve electrical grid reliability for Eastside communities.

Contact Heidi Bedwell, City of Bellevue EIS Program Manager info@EnergizeEastsideEIS.org

EnergizeEastsideEIS.org



COURTESY NOTICE OF PUBLIC HEARINGS

- Application File: Energize Eastside Environmental Impact Statement: Phase 2 Draft Environmental Impact Statement
- Application File Number: 14-139122-LE
- Applicant: Puget Sound Energy (PSE)
PO Box 97034
Bellevue, WA 98009
- Date and Location of Public Hearings:
- May 23, 2017**, 6:00 PM - 8:30 PM, in Oliver Hazen High School - 1101 Hoquiam Ave NE; Renton, WA 98059
- May 25, 2017**, 6:00 PM - 9:00 PM, in Bellevue City Hall - 450 110th Ave NE; Bellevue, WA 98004
- June 3, 2017**, 2:00 PM - 4:30 PM, in Rose Hill Elementary - 8110 128th Ave NE; Kirkland, WA 98033
- Date of Notice: **May 4, 2017**
- DEIS Available: **May 8, 2017**
- Project Location: Portions of Bellevue, Newcastle, Redmond, Renton, and unincorporated King County between the Sammamish Substation at 9221 Willow Road NE, Redmond, WA 98052, and the Talbot Hill Substation at 2400 South Puget Drive, Renton, WA 98055. In Newcastle, the project follows PSE's existing 115 kV transmission line corridor from the Bellevue-Newcastle city boundary to the Newcastle-Renton city boundary.
- Project Description: Construct approximately 18 miles of new 230 kilovolt (kV) electrical transmission lines and add a new substation (Richards Creek) at the Lakeside substation in Bellevue to connect two existing bulk energy systems (one to the north in Redmond and one to the south in Renton), supply future electrical capacity, and improve electrical grid reliability for Eastside communities. Project details and plans are available on the project website at www.EnergizeEastsideEIS.org.
- Public Hearing Purpose: To receive public input on the Phase 2 Draft EIS which will be available on May 8, 2017. The EIS is not a permit - it is one of many

sets of information the City of Newcastle will consider as the City decides whether to approve the project and issue necessary permits.

All interested persons may appear and provide testimony at the public hearing. Written comments on the Phase 2 Draft EIS may be admitted to Thara Johnson, Interim Community Development Director, at Newcastle City Hall. Hard copies of the Phase 2 Draft EIS will be available for review at Newcastle City Hall or the Library. Any person wishing to obtain copies of the Phase 2 Draft EIS can request electronic copies from the City at no cost and physical copies for a \$300 copying charge. Any person wishing to request additional information on this proposed project should contact the Community Development Department at Newcastle City Hall.

NOTE: If you require this material in Braille, audiocassette, or large print, please call (425) 649-4444.



COURTESY NOTICE-EXTENDED COMMENT PERIOD

Application File: Energize Eastside Environmental Impact Statement: Phase 2 Draft Environmental Impact Statement

Application File Number: City of Bellevue File # 14-139122-LE

Applicant: Puget Sound Energy (PSE)
PO Box 97034
Bellevue, WA 98009

Project Location: Portions of Bellevue, Newcastle, Redmond, Renton, and unincorporated King County between the Sammamish Substation at 9221 Willow Road NE, Redmond, WA 98052, and the Talbot Hill Substation at 2400 South Puget Drive, Renton, WA 98055. In Newcastle, the project follows PSE's existing 115 kV transmission line corridor from the Bellevue-Newcastle city boundary to the Newcastle-Renton city boundary.

Project Description: Construct approximately 18 miles of new 230 kilovolt (kV) electrical transmission lines and add a new substation (Richards Creek) at the Lakeside substation in Bellevue to connect two existing bulk energy systems (one to the north in Redmond and one to the south in Renton), supply future electrical capacity, and improve electrical grid reliability for Eastside communities. Project details and plans are available on the project website at www.EnergizeEastsideEIS.org.

PUBLIC COMMENT PERIOD EXTENDED: The comment period began on May 8, 2017 and was originally scheduled to end on June 21, 2017. The deadline for submitting comments is extended 15 days to **July 6, 2017**. All comments related to the Draft EIS must be received by this date. Mailed items that are postmarked by Thursday, **July 6, 2017** will be accepted. A valid physical mailing address is required to establish status as an official party of record. Written comments may be submitted:

Online at: www.EnergizeEastsideEIS.org
By email to: Info@EnergizeEastsideEIS.org
By mail to:
City of Bellevue
Development Services Department
Attn: Heidi Bedwell, Environmental Planning Manager
P.O. Box 90012
Bellevue, WA 98009-9012

Written comments on the Phase 2 Draft EIS may also be admitted to Thara Johnson, Senior Planner, at Newcastle City Hall. Hard copies of the Phase 2 Draft EIS will be available for review at Newcastle City Hall or the Library. Any person wishing to obtain copies of the Phase 2 Draft EIS, can request electronic copies from the City at no cost, and a \$300 copying charge for physical copies of the Phase 2 Draft EIS will be assessed. Any person wishing to request additional information on this proposed project should contact the Community Development Department at Newcastle City Hall.

NOTE: If you require this material in Braille, audiocassette, or large print, please call (425) 649-4444.

City of Bellevue(<https://bellevuewa.gov/cms/One.aspx?portalId=4779088>)
/ City News(<https://bellevuewa.gov/cms/One.aspx?portalId=4779088&pageId=6555573>) / Comment period open for
Energize Eastside draft EIS

Comment period open for Energize Eastside draft EIS

Three public hearings to be held, including one in Bellevue on May 25

The Phase 2 draft environmental impact statement for Puget Sound Energy's proposed Energize Eastside project has been published and is now in the 45-day public comment period. Residents can comment on the draft report through Wednesday, June 21. There are multiple ways to submit feedback:

- Via [online comment form \(http://www.energizeeastsideeis.org/participate.html\)](http://www.energizeeastsideeis.org/participate.html);
- Mail or email; or
- By giving oral comments during one of three public hearings.

The City of Bellevue will host the second public hearing on Thursday, May 25, at City Hall, 450 110th Ave. NE, 6-9 p.m. Additional hearings will be in Renton at Oliver Hazen High School on Tuesday, May 23, and Rose Hill Elementary School in Kirkland on Saturday, June 3. Attendance is optional -- you can provide comments without attending a public hearing.

Each meeting will begin with an open house, followed by a short presentation and an oral comment period. The comment period will begin approximately 45 minutes after the start of the meeting. The order of speakers will be chosen at random.

The Energize Eastside EIS preparation is being led by the City of Bellevue in cooperation with the partner cities of Kirkland, Newcastle, Redmond and Renton. The EIS will provide environmental review under the Washington State Environmental Policy Act (SEPA) of PSE's proposed Energize Eastside project. Although PSE has conducted extensive outreach on the project, the SEPA process is a separate requirement that must be completed before any permits may be issued. The EIS is not a permit -- it is one of many sets of information permitting agencies will consider as they decide whether to approve the project and issue necessary permits.

Visit the Phase 2 Draft EIS page (<http://www.energizeeastsideeis.org/phase-2-draft-eis.html>) to learn more about the Phase 2 draft EIS and download the files. Residents can also visit the Participate page (<http://www.energizeeastsideeis.org/participate.html>) for commenting instructions and tips on ways to make comments most effective.

Published on 05/12/2017

Phase 2 Draft Environmental Impact Statement for Energize Eastside

Councilmembers were also briefed on how their May 2016 scoping comments were addressed in the recently released Energize Eastside Phase 2 Draft Environmental Impact Statement (DEIS). Energize Eastside is PSE's proposed electrical facilities project to build approximately 18 miles of new 230-kilovolt transmission lines from Renton to Redmond, through Bellevue.

The presentation noted that the DEIS adequately addresses concerns and questions articulated in their earlier scoping letter. These issues included transparency and a thorough review of the alternatives for the project. During the conversation Monday night, councilmembers highlighted the fact that mitigation identified in the EIS process will inform permitting actions. The permit process will be overseen by each jurisdiction for its portion of the alignment and will begin when PSE submits a permit application.

The Phase 2 DEIS is available for [review online](http://www.energizeeastsideeis.org/phase-2-draft-eis.html) (<http://www.energizeeastsideeis.org/phase-2-draft-eis.html>). The current comment period will end on Wednesday, June 21. Additional details on how to comment and next steps are available at [EnergizeEastsideEIS.org](http://www.energizeeastsideeis.org/) (<http://www.energizeeastsideeis.org/>).

Published on 06/14/2017



Weekly Permit Bulletin

May 4, 2017

Providing official notice of land use applications, meetings, decisions, recommendations, hearings, and appeals of land use decisions within the City of Bellevue

How to use this Bulletin

To learn more about a project:

- Call the planner assigned to the project to make arrangements to review the project files.
- Visit City Hall Public Records between 8 a.m. and 4 p.m. Monday through Friday and review the project files.
- Click the name of the project to view digital plans.

To comment on a project:

- Send your comments in writing to the Development Services Department, and be sure to include your name and address.
- Comments will be accepted until the time a staff report is prepared for the decision or recommendation, with a minimum comment period of at least 14 days (30 days for shoreline projects).
- If you submit a written comment, we will send you a copy of the notice of decision or recommendation.

To appeal a permit decision:

- You must have filed a written comment expressing your concerns before the decision was made.
- Any appeal of a DSD decision to the Hearing Examiner must be received by the City Clerk's Office no later than 5 p.m. on the appeal deadline indicated on the notice. The appeal must include a written statement in the form described in LUC 20.35.250.A.2 together with an appeal notification form (available from the Office of the City Clerk).
- An appeal of a shoreline decision is made to the State Shoreline Hearing Board, must be in writing, and must be filed within 21 days of the date the DSD decision is received by the State Department of Ecology (DOE). The DSD decision will be sent to DOE by the close of business on the date of this notice. For additional information regarding shoreline appeals, please call the Shore Hearings Board at 360-459-6327.

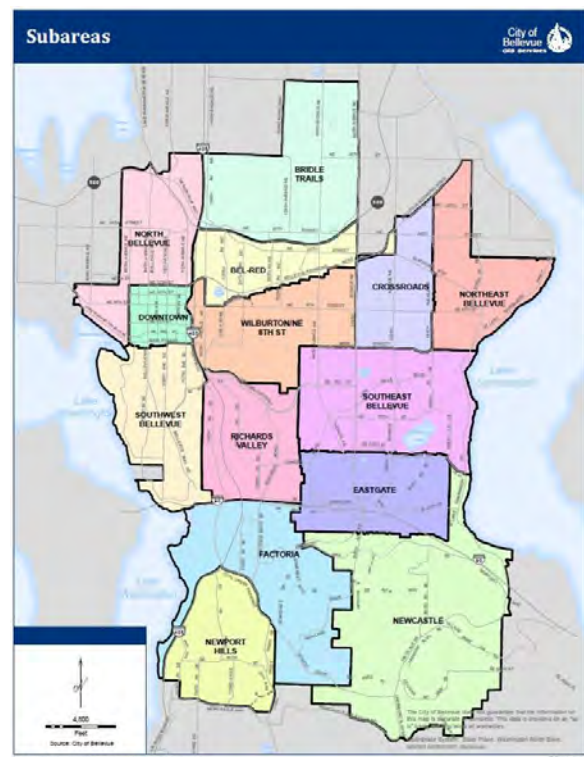
To receive the bulletin by email:

Please access our city website at www.bellevuewa.gov and click on Check Status / Weekly Permit Bulletin / Alerts. From there you may register to receive the bulletin weekly. You will continue to receive the bulletin until you unsubscribe from this service.

How to Reach Us:

The Development Services Center is located on the lobby floor of Bellevue City Hall at 450 110th Ave NE

P.O. Box 90012
Bellevue, WA 98009-9012
425-452-6800



GENERAL INFORMATION REGARDING USE OF OPTIONAL DNS PROCESS

When the SEPA field indicates a **Determination of Nonsignificance (DNS)** is expected, the optional DNS process is being used and a DNS is likely. This may be the only opportunity to comment on the environmental impacts of the proposal. The proposal may include mitigation measures under applicable codes, and the project review process may incorporate or require mitigation measures regardless of whether an Environmental Impact Statement (EIS) is prepared. The Threshold Determination will also be noticed in a subsequent issue of this Weekly Permit Bulletin. A copy of the subsequent Threshold Determination for the proposal may be obtained upon request.

Notice of Application

NOTICE OF APPLICATION Chaffey 104th St. Buffer Reduction

Location: 104 130th Ave SE

Subarea: Wilburton/NE 8th St.

File Number: 17-107962-LO

Description: Application for Critical Areas Land Use Permit approval to modify the 50 foot buffer from the top of a Critical Slope from 50 feet to 30 feet.

Approvals Required: Critical Areas Land Use Permit approval, Land Use approval and ancillary permits and approvals

SEPA: Exempt

Minimum Comment Period Ends: May 18, 2017, 5 PM. Refer to page one for information on how to comment on a project.

Date of Application: March 13, 2017

Completeness Date: April 17, 2017

Applicant: Chaffey Building Group

Applicant Contact: Jessica Van Vleet, Chaffey Building Group, 425-889-7643,

Planner: Leah Chulsky, 425-452-6834

Planner Email: lchulsky@bellevuewa.gov

NOTICE OF APPLICATION AND PUBLIC MEETING

REI at The Spring District

Location: 1209 124th Avenue NE – Blocks 7, 9, 11, 15

Subarea: Bel-Red

File Number: 17-108853-LD & 17-108852-LO

Description: Application for Design Review and a Critical Areas Land Use Permit approval to construct the Recreational Equipment, Inc. (REI) headquarters facility. The proposal consists of two buildings located over parcels 7, 9 and 11 within The Spring District Master Development Plan. Parcel 7 consists of a 2-story office building and a single story public market, consisting of approximately 255,019 square feet. Parcels 9 and 11 consist of a 5 story office building with ground level retail consisting of 422,692 square feet. Parking will be accommodated on Parcel 7 with 4 levels of below grade parking and on Parcels 9 and 11 with one level of below grade parking. A total of 876 parking stalls are proposed for the development. In addition, Parcel 15 which lies directly east of Parcels 9 and 11 will incorporate a multi-functional outdoor landscaped area. A Critical Areas Land Use Permit is required for this project in order to construct the proposed building on Parcel 7 within a steep slope critical area, running north south adjacent to 120th Avenue NE.

Approvals Required: Design Review approval, Critical Areas Land Use Permit approval and ancillary permits and approvals.

SEPA: Determination of Non-Significance is expected. Refer to page one General Information Regarding Use of Optional DNS Process.

Minimum Comment Period Ends: May 18, 2017, 5 PM. Refer to page one for information on how to comment on a project.

Public Meeting: June 7, 2017, 6 PM; Bellevue City Hall; 450 110th Ave NE,

Conference Room: 1E-108

Date of Application: March 23, 2017

Completeness Date: April 20, 2017

Applicant: Wright Runstad & Company

Applicant Contact: Joleen Peterson, JMJ Team, 206-596-2020, joleen@jmjteam.com

Planner: Laurie Tyler, 425-452-2728

Planner Email: lyler@bellevuewa.gov

Notice of Decision

NOTICE OF DECISION

Tam Phan Short Plat

Location: 4442 158th Ave SE

Subarea: Newcastle

File Number: 15-124560-LN

Description: Preliminary Short Plat approval to subdivide an existing parcel into 4 single family lots. SEPA review is included as the size of the lot is over an acre.

Decision: Approval with Conditions

Concurrency Determination: N/A

SEPA: Determination of Non-Significance is issued. Refer to page one for how to appeal SEPA.

Appeal Period Ends: May 18, 2017, 5 PM.
Refer to page one for information on how to appeal a project.

Date of Application: September 29, 2015

Completeness Date: October 19, 2015

Notice of Application Date: October 29, 2015

Applicant: Vinh Voung, 206-390-6422

Planner: Leah Chulsky, 425-452-6834

Planner Email: lechulsky@bellevuewa.gov

NOTICE OF APPLICATION

Witham Boat Lift

Location: 5 Enatai Dr

Subarea: Southwest Bellevue

File Number: 16-144509-WG

Description: Shoreline Substantial Development Permit approval to replace the existing boatlift and canopy associated with the existing residential dock with a larger boatlift and canopy.

Decision: Approval with Conditions

Concurrency Determination: N/A

SEPA: Determination of Non-Significance is issued. Refer to page one for how to appeal SEPA.

Appeal Period Ends: May 25, 2017, 5 PM.
Refer to page one for information on how to appeal a project.

Date of Application: October 19, 2016

Completeness Date: November 19, 2016

Notice of Application Date: December 22, 2016

Applicant: Evan Wehr, Ecco Design Inc., 206-706-3937, evan@eccodesigninc.com

Planner: David Wong, 425-452-4282

Planner Email: dwong@bellevuewa.gov

NOTICE OF DECISION, RECOMMENDATION AND PUBLIC HEARING

King County Puget Sound Emergency Radio Network (PSERN) - Bellevue Fire Station #9

Location: 12412 Newcastle Way

Subarea: Newport Hills

File Number: 16-139244-LB

Description: Recommendation for Conditional Use Permit approval to construct a 170-foot tall communication pole with antennas/other attachments and install associated ground-mounted equipment. Ground-mounted equipment will be screened with a fence and plantings. Site area for the parcel is 70,282 square feet.

Approvals Required: Conditional Use Permit approval and ancillary permits and approvals

Recommendation: Approval with Conditions

Concurrency Determination: N/A

SEPA: Determination of Non-Significance is issued. Refer to page one for how to appeal.

SEPA Appeal Period Ends: May 18, 2017, 5 PM. Refer to page one for information on how to comment on a project.

Public Hearing: May 18, 2017; 6 PM; Bellevue City Hall, 450 110th Avenue NE

Hearing Room: 1E-126

Date of Application: August 8, 2016

Completeness Date: September 8, 2016

Notice of Application Date: September 29, 2016

Owner: Bellevue Fire Department

Applicant Contact: Sarah Telschow, STELSCHOW@ODELIA.COM, 206-979-6268

Planner: Carol Hamlin, 425-452-2731

Planner Email: chamlin@bellevuewa.gov

NOTICE OF DECISION

Belvedere Lot 6 Single Family Residence

Location: 5139 145th PI SE

Subarea: Factoria

File Number: 17-104023-LO

Description: Critical Areas Land Use Permit approval to construct a single family residence within a steep slope buffer and structure setback area.

Decision: Approval with Conditions

Concurrency Determination: N/A

SEPA: Exempt

Appeal Period Ends: May 18, 2017, 5 PM.
Refer to page one for information on how to comment on a project.

Date of Application: January 23, 2017

Completeness Date: January 25, 2017

Notice of Application Date: February 2, 2017

Applicant: Ryan Grams

Applicant Contact: Matt Wasse, SWW, 206 405-2537, matt@sww-ai.com

Planner: Peter Rosen, 425-452-5210

Planner Email: prosen@bellevuewa.gov

Notice of Public Hearing/Open House

NOTICE OF AVAILABILITY OF PHASE 2 DRAFT ENVIRONMENTAL IMPACT STATEMENT (DEIS)

NOTICE OF PUBLIC HEARINGS/OPEN HOUSES

Project Name: Energize Eastside
<http://www.energizeeastsideeis.org/library.html#phase2deis>

Project Proponent: Puget Sound Energy

Location: Portions of Bellevue, Newcastle, Redmond, Renton, and unincorporated King County between the Sammamish Substation at 9221 Willows Road NE, Redmond, WA 98052, and the Talbot Hill Substation at 2400 South Puget Drive, Renton, WA 98055.

City of Bellevue EIS File Number: 14-139122-LE

Description: Construct approximately 18 miles of new 230 kilovolt (kV) electrical transmission lines and add a new substation (Richards Creek) at the Lakeside substation in Bellevue to connect two existing bulk energy systems (one to the north in Redmond and one to the south in Renton), supply future electrical capacity, and improve electrical grid reliability for Eastside communities. Project details and plans are available in the project file and on the project website at www.energizeeastsideeis.org.

EIS Required: On April 30, 2015, the Environmental Coordinator for the City of Bellevue, serving as lead agency, published a Notice of Determination of Significance, indicating that this proposal could have a significant adverse impact on the environment and required preparation of an Environmental Impact Statement (EIS) under Revised Code of

Washington (RCW) 43.21C.030(2)(c). On January 28, 2016, the lead agency issued a Phase 1 Programmatic Draft EIS, which evaluated alternative methods to achieve PSE's project objectives. A Phase 2 Draft EIS has been prepared to analyze PSE's proposal and alternatives proposed by PSE. The EIS is not a permit - it is one of many sets of information permitting agencies will consider as they decide whether to approve the project and issue necessary permits.

Approvals required: Local permit review and approval within each affected jurisdiction. The Energize Eastside EIS is not a permit - it is one of many sets of information permitting agencies will consider as they decide whether to approve the project and issue necessary permits.

Draft EIS Available: The Phase 2 Draft EIS will be available to the public on May 8, 2017. It will be accessible online at www.EnergizeEastsideEIS.org.

Printed copies are available for review at the following libraries:

Redmond Library, 15990 NE 85th St., Redmond, WA, 98052

Newport Way Library, 14250 SE Newport Way, Bellevue, WA 98006

Lake Hills Library, 15590 Lake Hills Blvd., Bellevue, WA 98007

Newcastle Library, 12901 Newcastle Way, Newcastle, WA 98056

Bellevue Library, 1111 110th Ave. NE, Bellevue, WA 98004

Renton Library, 100 Mill Ave S., Renton, WA 98057

Renton Highlands Library, 2801 NE 10th St., Renton, 98056

Copies of the document are also available for review at the following city offices:

City of Bellevue Development Services Department, City Hall, 450 110th Ave NE, Bellevue, WA 98004

City of Renton Planning Division, 1055 South Grady Way, Renton, WA 98057

City of Redmond Planning and Community Development, City Hall, 15670 NE 85th St Redmond, WA 98052

City of Newcastle Planning Division, City Hall, 12835 Newcastle Way, Suite 200, Newcastle, WA, 98056

Electronic copies of the EIS (Adobe PDF) on compact disk may be obtained free of charge at

the following City offices (addresses above):
Bellevue, Newcastle, Redmond, and Renton.

Printed copies of the EIS may be ordered and purchased by contacting

Info@EnergizeEastsideEIS.org

Public Comment: Agencies, affected tribes, and members of the public are invited to comment on the Phase 2 Draft EIS. You may comment on alternatives, mitigation measures, probable significant adverse impacts, and licenses or other approvals that may be required.

Public Hearing/Open House Dates, Times, and Locations:

Tuesday, May 23, 2017 6:00 – 8:30 PM:

Oliver Hazen High School - 1101 Hoquiam Ave NE, Renton, WA 98059

Thursday, May 25, 2017 6:00 – 9:00 PM:

Bellevue City Hall - 450 110th Ave NE, Bellevue, WA 98004

Saturday, June 3, 2017 2:00 – 4:30 PM:

Rose Hill Elementary - 8110 128th Ave NE, Kirkland, WA 98033

PUBLIC COMMENT PERIOD: The comment period opens May 8, 2017. The deadline for submitting comments is Wednesday, June 21, 2017. All comments related to the Draft EIS must be received by this date. Mailed items that are postmarked by Wednesday, June 21, 2017 will be accepted. Comments may be submitted orally at the public hearings or in writing. A valid physical mailing address is required to establish status as an official party of record. Written comments may be submitted:

Online at:

www.EnergizeEastsideEIS.org

By email to:

Info@EnergizeEastsideEIS.org

By mail to:

City of Bellevue
Development Services Department
Attn: Heidi Bedwell, Environmental Planning Manager
P.O. Box 90012
Bellevue, WA 98009-9012

Applicant Contact: Bradley Strauch, Puget Sound Energy

Applicant Contact Email:

bradley.strauch@pse.com

Lead Agency Contact: Heidi M. Bedwell, City of Bellevue

Lead Agency Contact Phone: 425-452-4862

Lead Agency Contact Email:

hbedwell@bellevuewa.gov



Weekly Permit Bulletin

June 22, 2017

Providing official notice of land use applications, meetings, decisions, recommendations, hearings, and appeals of land use decisions within the City of Bellevue

How to use this Bulletin

To learn more about a project:

- Call the planner assigned to the project to make arrangements to review the project files.
- Visit City Hall Public Records between 8 a.m. and 4 p.m. Monday through Friday and review the project files.
- Click the name of the project to view digital plans.

To comment on a project:

- Send your comments in writing to the Development Services Department, and be sure to include your name and address.
- Comments will be accepted until the time a staff report is prepared for the decision or recommendation, with a minimum comment period of at least 14 days (30 days for shoreline projects).
- If you submit a written comment, we will send you a copy of the notice of decision or recommendation.

To appeal a permit decision:

- You must have filed a written comment expressing your concerns before the decision was made.
- Any appeal of a DSD decision to the Hearing Examiner must be received by the City Clerk's Office no later than 5 p.m. on the appeal deadline indicated on the notice. The appeal must include a written statement in the form described in LUC 20.35.250.A.2 together with an appeal notification form. [Link to Form](#)
- An appeal of a shoreline decision is made to the State Shoreline Hearing Board, must be in writing, and must be filed within 21 days of the date the DSD decision is received by the State Department of Ecology (DOE). The DSD decision will be sent to DOE by the close of business on the date of this notice. For additional information regarding shoreline appeals, please call the Shore Hearings Board at 360-459-6327.

To receive the bulletin by email:

Please access our city website at www.bellevuewa.gov and click on Check Status / Weekly Permit Bulletin / Alerts. From there you may register to receive the bulletin weekly. You will continue to receive the bulletin until you unsubscribe from this service.

How to Reach Us:

The Development Services Center is located on the lobby floor of Bellevue City Hall at 450 110th Ave NE

P.O. Box 90012
Bellevue, WA 98009-9012
425-452-6800



GENERAL INFORMATION REGARDING USE OF OPTIONAL DNS PROCESS

When the SEPA field indicates a **Determination of Nonsignificance (DNS)** is expected, the optional DNS process is being used and a DNS is likely. This may be the only opportunity to comment on the environmental impacts of the proposal. The proposal may include mitigation measures under applicable codes, and the project review process may incorporate or require mitigation measures regardless of whether an Environmental Impact Statement (EIS) is prepared. The Threshold Determination will also be noticed in a subsequent issue of this Weekly Permit Bulletin. A copy of the subsequent Threshold Determination for the proposal may be obtained upon request.

Notice of Application

NOTICE OF APPLICATION

Robinswood Preliminary Short Plat

Location: 14848 SE 22nd Street

Neighborhood: Southeast Bellevue

File Number: 17-113835-LN

Description: Application for Preliminary Short Plat to subdivide one (1) existing parcel into three (3) lots. The property is zoned R-5.

Approvals Required: Preliminary Short Plat approval and ancillary permits and approvals.

SEPA: Exempt

Minimum Comment Period Ends: July 6, 2017, 5 PM. Refer to page one for information on how to comment on a project.

Date of Application: May 19, 2017

Completeness Date: June 16, 2017

Applicant: Randy Trostle, Robinswood Homes LLC, 206-890-0696

Applicant Contact: Joshua Beard, Core Design Inc., 425-885-7877, jpb@coresigninc.com

Planner: Nick Whipple, 425-452-4578

Planner Email: nwhipple@bellevuewa.gov

RE-NOTICE OF APPLICATION

[Brookside Stair Replacement](#)

Location: 11400 SE 6th Street

Neighborhood: Southwest Bellevue

File Number: 17-113355-LO

Reason for Re-Notice: To complete application materials.

Description: Application for Critical Areas Land Use Permit approval to replace two existing exterior staircases to the main building entry and regrade the existing paved pedestrian walkways for ADA accessibility. The project includes mitigation and restoration plantings to mitigate for impacts to the Sturtevant Creek stream buffer.

Approvals Required: Critical Areas Land Use Permit approval and ancillary permits and approvals

SEPA: Determination of Non-Significance is expected. Refer to page one General Information Regarding Use of Optional DNS Process.

Minimum Comment Period Ends: July 6, 2017, 5 PM. Refer to page one for information on how to comment on a project.

Date of Application: May 10, 2017

Completeness Date: June 1, 2017

Applicant Contact: Gary Yao, Mackenzie, 206-749-9993

Planner: Nick Whipple, 425-452-4578

Planner Email: nwhipple@bellevuewa.gov

Notice of Extended Comment Period

NOTICE OF EXTENDED COMMENT PERIOD FOR THE ENERGIZE EASTSIDE PHASE 2 DRAFT ENVIRONMENTAL IMPACT STATEMENT (DEIS)

Project Name: Energize Eastside

<http://www.energizeeastsideeis.org/library.html#phase2deis>

Project Proponent: Puget Sound Energy

Location: Portions of Bellevue, Newcastle, Redmond, Renton, and unincorporated King County between the Sammamish Substation at 9221 Willows Road NE, Redmond, WA 98052, and the Talbot Hill Substation at 2400 South Puget Drive, Renton, WA 98055.

City of Bellevue EIS File Number: 14-139122-LE

Project Description: Construct approximately 18 miles of new 230 kilovolt (kV) electrical transmission lines and add a new substation (Richards Creek) at the Lakeside substation in Bellevue to connect two existing bulk energy systems (one to the north in Redmond and one to the south in Renton), supply future electrical capacity, and improve electrical grid reliability for Eastside communities. Project details and

plans are available in the project file and on the project website at www.EnergizeEastsideEIS.org.

PUBLIC COMMENT PERIOD

EXTENDED: The comment period began on May 8, 2017 and was originally scheduled to end on June 21, 2017. The deadline for submitting comments is extended 15 days to **July 6, 2017**. All comments related to the Draft EIS must be received by this date. Mailed items that are postmarked by Thursday, **July 6, 2017** will be accepted. A valid physical mailing address is required to establish status as an official party of record. Written comments may be submitted:

Online at: www.EnergizeEastsideEIS.org

By email to:

Info@EnergizeEastsideEIS.org

By mail to:

City of Bellevue
Development Services Department
Attn: Heidi Bedwell, Environmental Planning Manager
P.O. Box 90012
Bellevue, WA 98009-9012

EIS Required: On April 30, 2015, the Environmental Coordinator for the City of Bellevue, serving as lead agency, published a Notice of Determination of Significance, indicating that this proposal could have a significant adverse impact on the environment and required preparation of an Environmental Impact Statement (EIS) under Revised Code of Washington (RCW) 43.21C.030(2)(c). On January 28, 2016, the lead agency issued a Phase 1 Programmatic Draft EIS, which evaluated alternative methods to achieve PSE's project objectives. A Phase 2 Draft EIS has been prepared to analyze PSE's proposal and alternatives proposed by PSE. The EIS is not a permit - it is one of many sets of information permitting agencies will consider as they decide whether to approve the project and issue necessary permits.

Approvals required: Local permit review and approval within each affected jurisdiction. The Energize Eastside EIS is not a permit - it is one

of many sets of information permitting agencies will consider as they decide whether to approve the project and issue necessary permits.

Draft EIS Available: Accessible online at www.EnergizeEastsideEIS.org.

Printed copies are available for review at the following libraries:

Redmond Library, 15990 NE 85th St., Redmond, WA, 98052

Newport Way Library, 14250 SE Newport Way, Bellevue, WA 98006

Lake Hills Library, 15590 Lake Hills Blvd., Bellevue, WA 98007

Newcastle Library, 12901 Newcastle Way, Newcastle, WA 98056

Bellevue Library, 1111 110th Ave. NE, Bellevue, WA 98004

Renton Library, 100 Mill Ave S., Renton, WA 98057

Renton Highlands Library, 2801 NE 10th St., Renton, 98056 **Copies of the document are also available for review** at the following city offices:

City of Bellevue Development Services Department, City Hall, 450 110th Ave NE, Bellevue, WA 98004

City of Renton Planning Division, 1055 South Grady Way, Renton, WA 98057

City of Redmond Planning and Community Development, City Hall, 15670 NE 85th St Redmond, WA 98052

City of Newcastle Planning Division, City Hall, 12835 Newcastle Way, Suite 200, Newcastle, WA, 98056

Electronic copies of the EIS (Adobe PDF) on compact disk may be obtained free of charge at the following City offices (addresses above): Bellevue, Newcastle, Redmond, and Renton.

Printed copies of the EIS may be ordered and purchased by contacting

Info@EnergizeEastsideEIS.org

Applicant Contact: Bradley Strauch, Puget Sound Energy

Applicant Contact Email:

bradley.strauch@pse.com

Lead Agency Contact: Heidi M. Bedwell, City of Bellevue

Lead Agency Contact Phone: 425-452-4862

Lead Agency Contact Email:

hbedwell@bellevuewa.gov



City of Bellevue, Washington - Government

@bellevuewashington

- Home
- Posts
- About
- Photos
- Videos
- Poll
- Notes
- Reviews
- Events
- Community

Create a Page

Like Share ...



Like Comment

Tim Shook, Inna Blair, Debbie Christopherson and 5 others like this.

Top Comments

Leslie Dycus Harris Karli Quamstrom-Dycus

May 25 at 10:25am



City of Bellevue, Washington - Government

May 24

REMINDER: A public hearing on the Phase 2 Draft Environmental Impact Statement (EIS) for Puget Sound Energy's (PSE) proposed Energize Eastside project will be at Bellevue City Hall tomorrow, 6-9 p.m.

Can't make it? There are multiple ways to engage and submit your comments. Learn more at www.EnergizeEastsideEIS.org



Like Comment

Margo Allan - Lake Samm Properties and Thomas Lørup Duun like this.

1 share



City of Bellevue, Washington - Government

May 24

Clean House at this Weekend's Recycling Event

Now's the time to spring clean! Everything you drop off will be recycled at Bellevue's End-of-Life Residential Provision Collection Event this Saturday. Learn

Send Message

Search for posts on this Page

English (US) · Español · Português (Brasil) · Français (France) · Deutsch

+

Privacy · Terms · Advertising · Ad Choices · Cookies · More

Facebook © 2017



City of Bellevue,
Washington -
Government

@bellevuewashington

Home

Posts

About

Photos

Videos

Poll

Notes

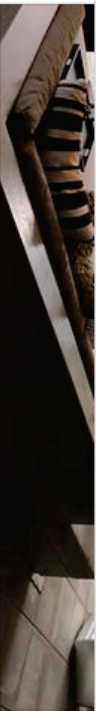
Reviews

Events

Community

Create a Page

Live Share ...



425business.com

425BUSINESS.COM

Like Comment Share

Van Marcela, Shawn Dunn, Randy Ransom and 5 others like this.



City of Bellevue, Washington - Government

June 19 · 🌐

The comment period for the Phase 2 Draft Environmental Impact Statement for Puget Sound Energy's proposed Energize Eastside has been extended to Thursday, July 6. Visit www.EnergizeEastsideEIS.org to learn more about the proposed project, the EIS process and how you can comment.

Like Comment



City of Bellevue, Washington - Government

June 17 · 🌐

This month's Lake to Lake news show features construction of the new Meydenbauer Bay Park, golf, bike safety tips and more. https://www.youtube.com/watch?v=bVYrZaJ_m4o



Send message

Search for posts on this Page

English (US) · Español · Português (Brasil) · Français (France) · Deutsch +

Privacy · Terms · Advertising · Ad Choices · Cookies · More · Facebook © 2017



Bellevue, Washington
@bellevuewa

Tweets **3,604**
Following **37**
Followers **8,000**
Likes **160**

Follow



1 7 8



Bellevue, Washington @bellevuewa · May 24
Public Hearing on Draft EIS for PSE's Energize Eastside is tomorrow at City Hall, 6-9pm. Check out ways to comment: bit.ly/2qldFCM

energize EASTSIDE EIS
Environmental Impact Statement

1 1 1



Bellevue, Washington @bellevuewa · May 24
Residents clean house at spring recycling event [divr.ilrPDZ8YS](https://www.facebook.com/divr.ilrPDZ8YS)

1 1 1



Bellevue, Washington @bellevuewa · May 24

 **Bellevue, Washington**
[@bellevuewa](#)

Tweets **3,604**
Following **37**
Followers **8,000**
Likes **160**

Follow




 **Bellevue, Washington** [@bellevuewa](#) · Jun 19
Phase 2 Draft EIS comment period for PSE's Energize Eastside extended to July 6. Learn more & comment: bit.ly/2qldfCM



energize EASTSIDE
EIS Environmental Impact Statement
Comment Period Extended Through July 6

Logos for: City of Bellevue, City of Bothell, City of Burien, City of Duwamish, City of Everett, City of Kent, City of Lynnwood, City of Maple Valley, City of North Bend, City of Shoreline, City of Tukwila, City of University Place, City of West Seattle, City of White Center, City of Woodland Park, City of Woodinville, City of Shoreline, City of Tukwila, City of University Place, City of West Seattle, City of White Center, City of Woodland Park, City of Woodinville.

 **Bellevue Parks** [@BVueParks](#) · Jun 16
Inspiration Playground opens in 12 days! The new universally accessible play area offers fun for all. Thanks to our partner [@otlanyBellevue](#).



Appendix II Public Hearing Materials

Welcome!

Agenda

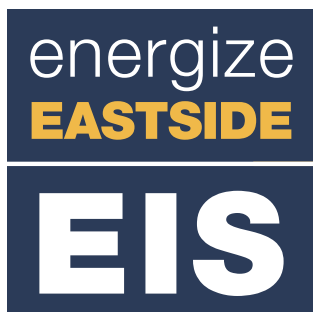
Open House	30 minutes
Presentation	15 minutes
Public Comment Period*	105 minutes

* The order of speakers will be selected randomly.

Phase 2 Draft EIS Public Hearing

Ask about the **implications and potential impacts of project-specific alternatives** evaluated in the Phase 2 Draft EIS on PSE's Energize Eastside project.

Tell the Partner Cities — Redmond, Bellevue, Newcastle, Renton and Kirkland — **what you think about the analysis** provided in the Phase 2 Draft EIS on PSE's Energize Eastside project.



Environmental Impact Statement

What is Energize Eastside?

PSE proposes to construct **a new 230 kilovolt (kV) electrical transmission line** connecting substations in Redmond and Renton to **a new substation** adjacent to the Lakeside substation in Bellevue. The new substation and upgraded transmission line will increase electrical capacity and improve electrical grid reliability for Eastside communities.

Technical Issues

- Projected Eastside load growth is outstripping PSE's capacity to deliver reliable electricity
- On cold winter and hot summer days 4 transformers and several 115 kV lines operate near capacity
- These components could exceed their capacity as early as the winter of 2017-18 with potential for forced power outages by the summer of 2018

Regulatory Issues

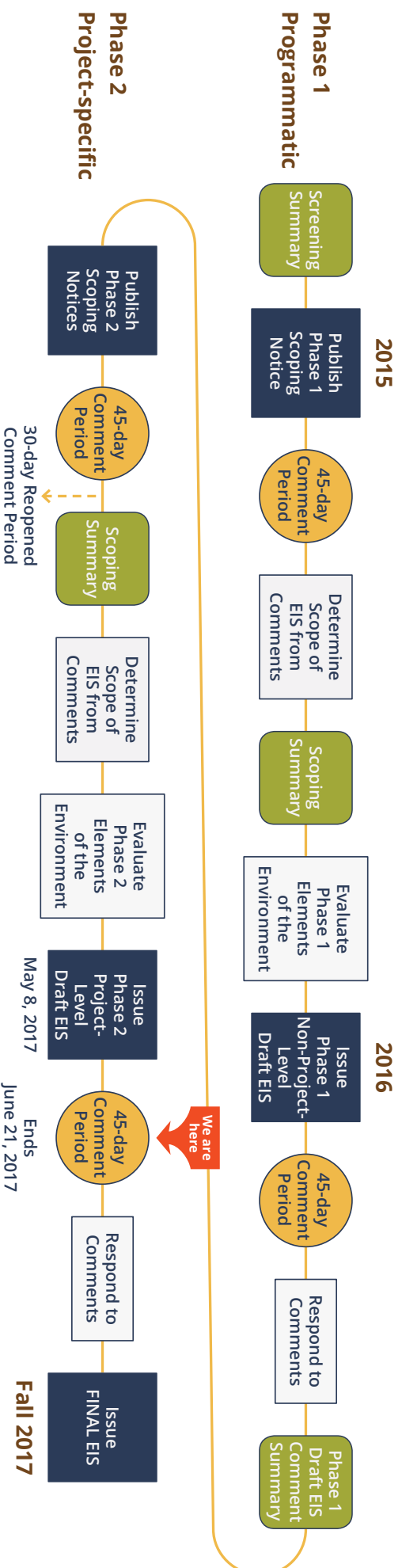
- Projected system overloads do not comply with minimum reliability requirements*
- A new 230 kV transmission line and a new substation is PSE's proposed option
- The Phase 2 Draft EIS evaluates PSE's proposed options and a no action alternative
- After a Final EIS is completed, permits will be required from all affected jurisdictions



* as mandated by the North American Electric Reliability Corporation (NERC) and Western Electricity Coordinating Council (WECC)

Phased Review Process

SCHEDULE FOR DEVELOPING THE EIS



Phase 1: Programmatic Review

- Examination of various ways to address capacity deficiency in Eastside electrical transmission network
- Evaluation of environmental impacts associated with alternative solutions to deficiency problem
- Identification of potential mitigation measures for significant unavoidable impacts

Phase 2: Project-specific Review

- Examination of project-level alternatives that meet PSE's project objectives, including possible alternate routes for transmission lines
- Evaluation of project-level environmental impacts
- Identification of potential mitigation measures for significant unavoidable impacts

What is an EIS?

What is SEPA?

The State Environmental Policy Act (SEPA) requires agencies to consider the likely environmental consequences of governmental decisions with rules providing detail for the environmental review process.

What is an EIS and why is it being prepared?

An environmental impact statement, or EIS, provides an impartial discussion of:

- significant environmental impacts
- reasonable alternatives
- mitigation measures that would avoid or minimize adverse impacts

The Energize Eastside EIS is being prepared because the cities of Bellevue, Kirkland, Newcastle, Redmond and Renton have determined that the PSE proposal has the potential to result in significant adverse impacts.

The City of Bellevue is leading the SEPA EIS process in cooperation with the Partner Cities.

The Final EIS is not a permit

The EIS is only one of many sets of information permitting agencies will consider as they decide whether to approve the project and issue necessary permits.

How will the Final EIS assist decision makers?

The Final EIS will include:

- likely significant adverse environmental impacts of PSE's proposal and alternatives
- mitigation measures to reduce impacts
- all comments received on the Phase 1 Draft EIS
- all comments received on the Phase 2 Draft EIS
- responses to Phase 1 and Phase 2 comments
- additional analysis needed based on comments received and new information learned

Agency decision-makers will consider information in the Final EIS as they decide whether or not to approve permits for the proposal. They can also condition the approval with requirements to address specific adverse environmental impacts identified in the EIS.

What's the Phase 2 Draft EIS?

THE NEXT STEP IN THE ENVIRONMENTAL REVIEW PROCESS

The Phase 1 Draft EIS—released January 2016—was a programmatic analysis. It broadly evaluated the general impacts associated with feasible and reasonable options available to address PSE's identified objectives for the project.

The Phase 2 Draft EIS is a project-level evaluation. It includes details of the proposed development at specified geographic locations with detailed analysis of potential environmental impacts.

What are the elements of the environment analyzed in the EIS?

The Phase 2 Draft EIS considers potential impacts on the natural environment and the built environment, including the following resource topics:



Land Use & Housing



Recreation



Scenic Views & the Aesthetic Environment



Historic & Cultural Resources



Water Resources



Environmental Health —
Electric & Magnetic Fields



Plants & Animals



Environmental Health — Pipeline Safety



Greenhouse Gases



Economics

Impacts are analyzed both in the **short-term** (during construction) **and over the long-term** operation of the project. In compliance with SEPA, the EIS also addresses **cumulative impacts** and **significant unavoidable adverse impacts**.

What stage of design does the DEIS evaluate?

Consistent with SEPA, the Phase 2 Draft EIS was prepared at an early stage of design for PSE's project. This allows agency review and input early in the process, affording an opportunity to identify potential issues or problems. Information about the project is subject to refinement as the design is further developed. In cases of uncertainty about potential impacts, the Phase 2 Draft EIS uses conservative assumptions (i.e., a "worst-case" analysis) to ensure that potentially significant impacts are addressed.

No-Action Alternative

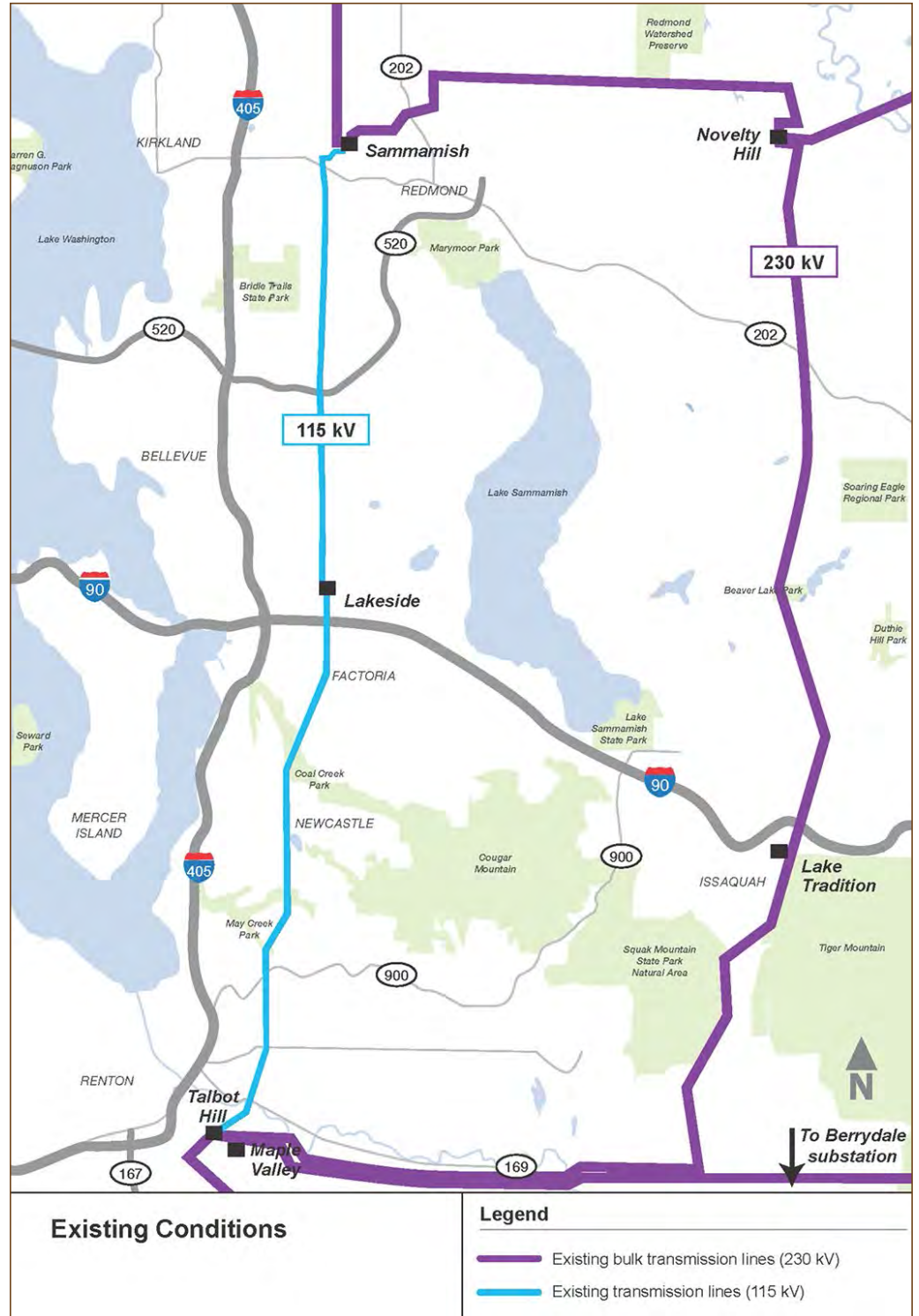
BASELINE

Required under SEPA — as a baseline against which the action alternatives can be compared

Existing 50'-60' tall H-frame poles would remain

No new 230 kV line, substation, major battery storage or generation facility would be built

Maintenance, conservation and certain other activities that do not require state or local government approvals could continue



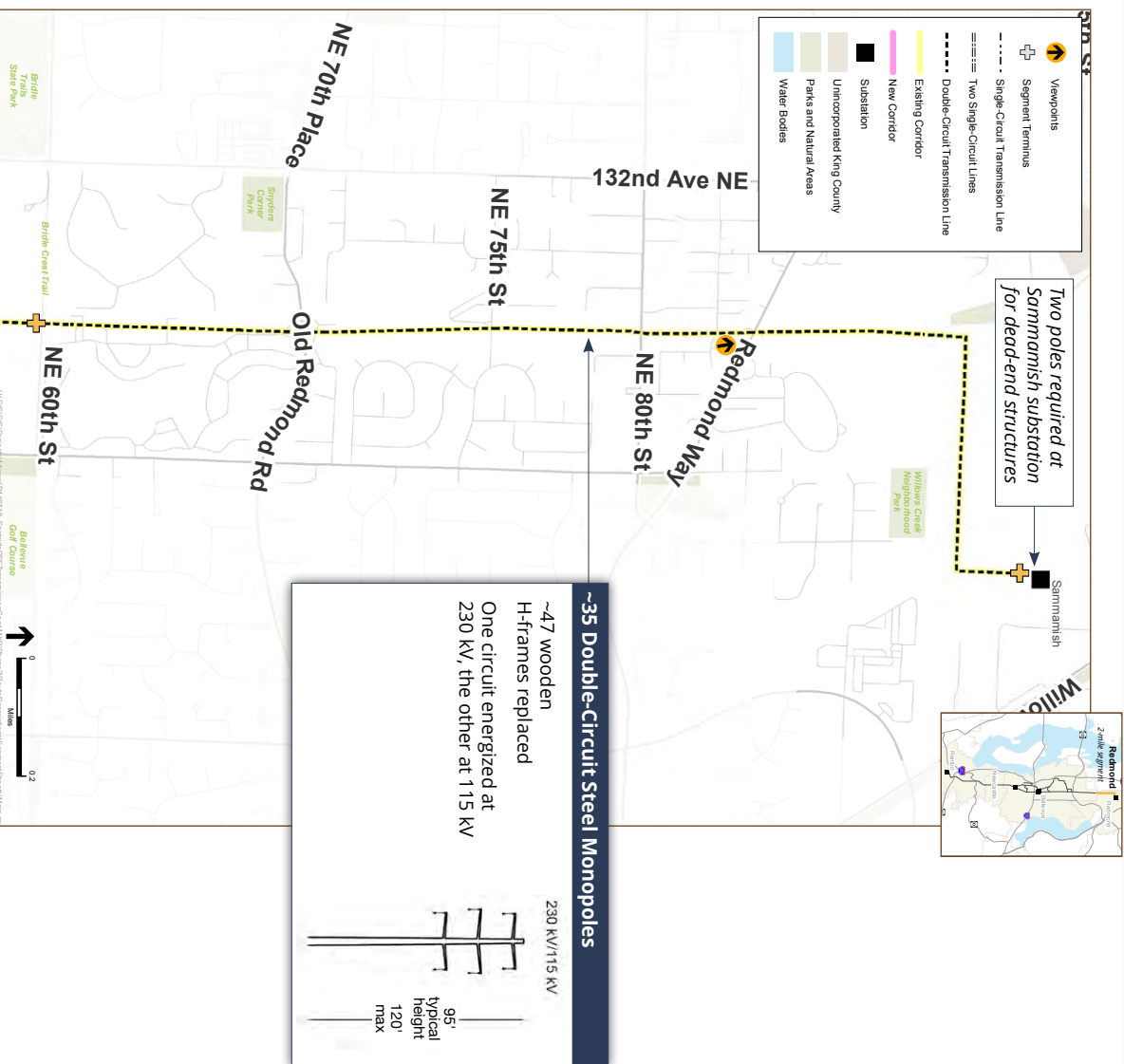
Alt 1: Redmond Segment

PSE'S PREFERRED ALIGNMENT — ALONG EXISTING CORRIDOR

From Redmond Way looking north



- Segment entirely within PSE's existing 100-foot, 115 kV corridor
- No new easements or property acquisition needed
- Clearing for vegetation over 15' in height: 16' from outside transmission wires
- Olympic pipelines buried on either side (east or west) of existing corridor
- Poles would be placed in the center of the corridor



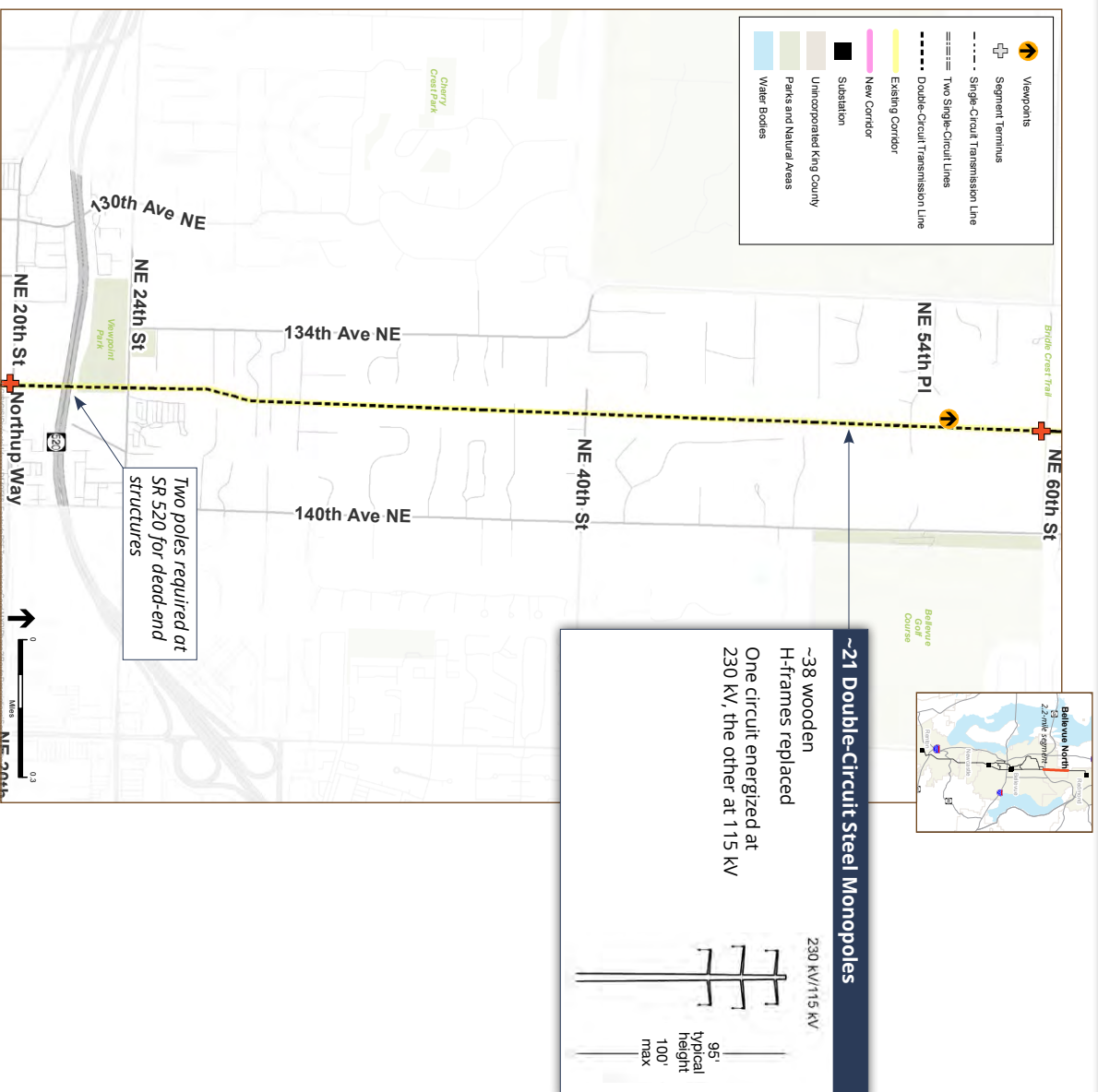
Alt 1: Bellevue North Segment

PSE'S PREFERRED ALIGNMENT — ALONG EXISTING CORRIDOR

From NE 54th PI looking north



- Segment entirely within PSE's existing 100-foot, 115 kV corridor
- No new easements or property acquisition needed
- Clearing for vegetation over 15' in height: 16' from outside transmission wires
- Olympic pipelines buried on either side (east or west) of existing corridor
- Poles would be placed in the center of the corridor



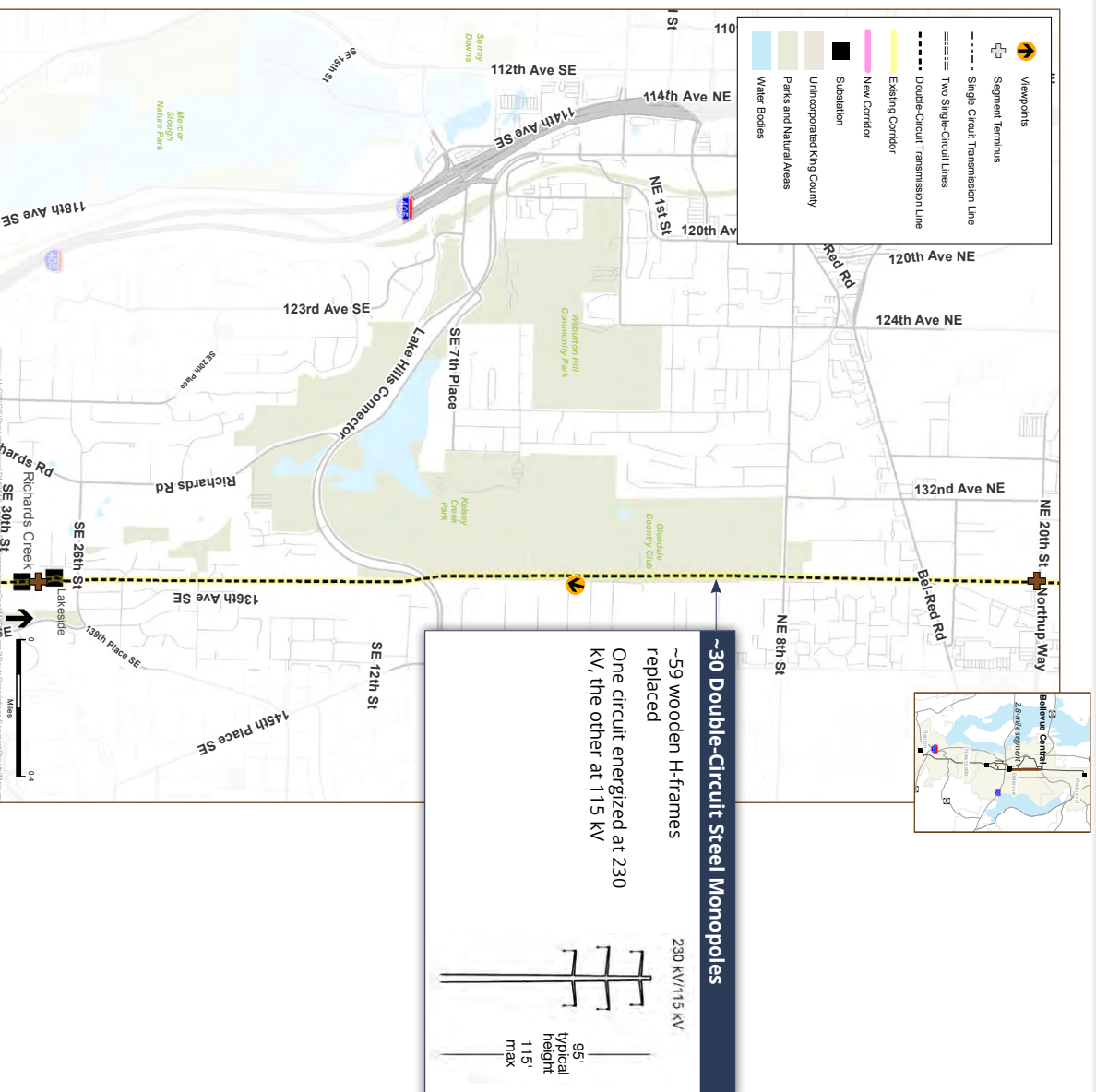
Alt 1: Bellevue Central Segment

PSE'S PREFERRED ALIGNMENT—EXISTING CORRIDOR OPTION

From 136th Ave SE looking south



- East Bellevue Community Council has jurisdiction between NE 8th St and SE 12th St for some permitting decisions
- Segment entirely within PSE's existing 100-foot, 115 kV corridor
- No new easements or property acquisition needed
- Clearing for vegetation over 15' in height: 16' from outside transmission wires
- Olympic pipelines buried on either side (east or west) of existing corridor
- Poles would be placed in the center of the corridor



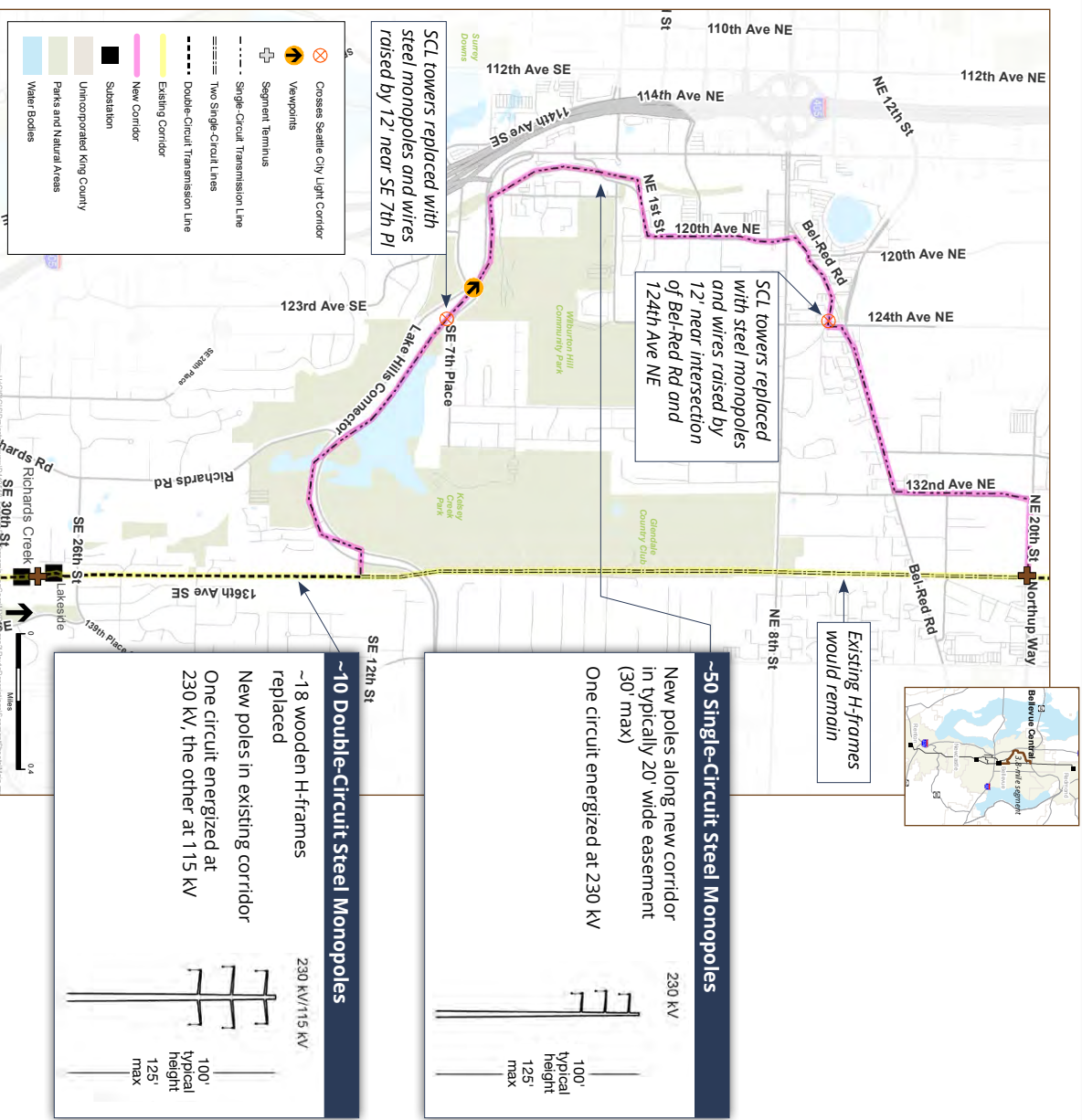
Alt 1: Bellevue Central Segment

BYPASS OPTION 1

From Lake Hills Connector looking northwest



- New easements needed for about 50 properties (about 5 acres) in new corridor
- No houses condemned or demolished — some garages and sheds would need to be moved or demolished
- Clearing for vegetation over 15' in height: 16' from outside transmission wire in existing corridor
- Clearing for vegetation over 15' in height: 6' from pole on wire-free side along new corridor
- Olympic pipelines buried on either side (east or west) of existing corridor
- Poles would be placed in the center of the existing corridor
- Not adjacent to pipeline where option departs from existing corridor



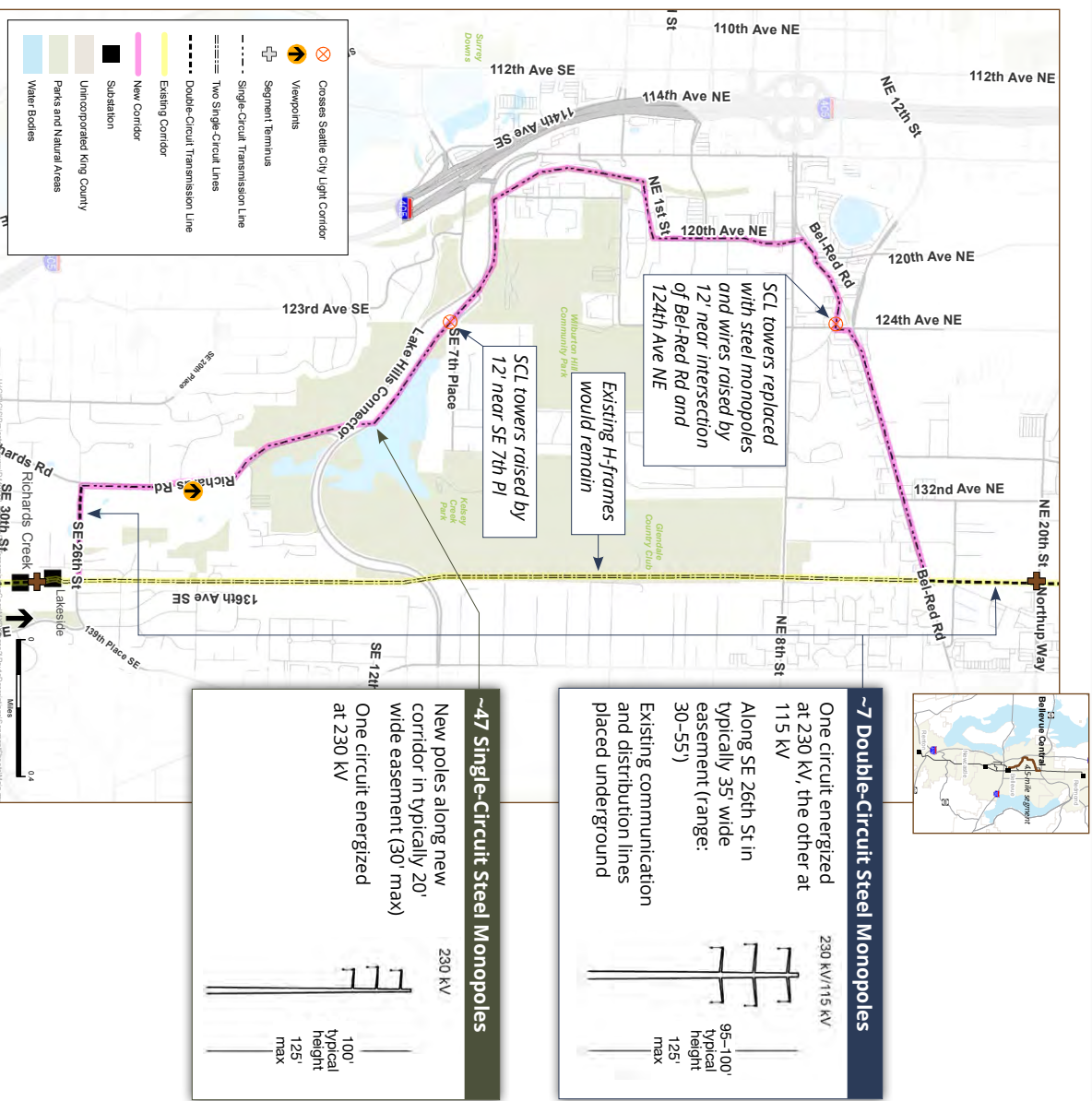
Alt 1: Bellevue Central Segment

BYPASS OPTION 2

From Richards Road looking north



- New easements needed for about 60 properties (about 7 acres) in new corridor
- No houses condemned or demolished — some garages and sheds would need to be moved or demolished
- Clearing for vegetation over 15' in height: 16' from outside transmission wire in existing corridor
- Clearing for vegetation over 15' in height: 6' from pole on wire-free side along new corridor for single-circuit monopoles
- Olympic pipelines buried on either side (east or west) of existing corridor
- Pole pairs would be placed in the center of the corridor
- Not adjacent to pipeline where option departs from existing corridor



~7 Double-Circuit Steel Monopoles

One circuit energized at 230 kV, the other at 115 kV

Along SE 26th St in typically 35' wide easement (range: 30-55')

Existing communication and distribution lines placed underground

230 kV/115 kV

95-100' typical height
125' max

~47 Single-Circuit Steel Monopoles

New poles along new corridor in typically 20' wide easement (30' max)

One circuit energized at 230 kV

230 kV

100-125' typical height
125' max

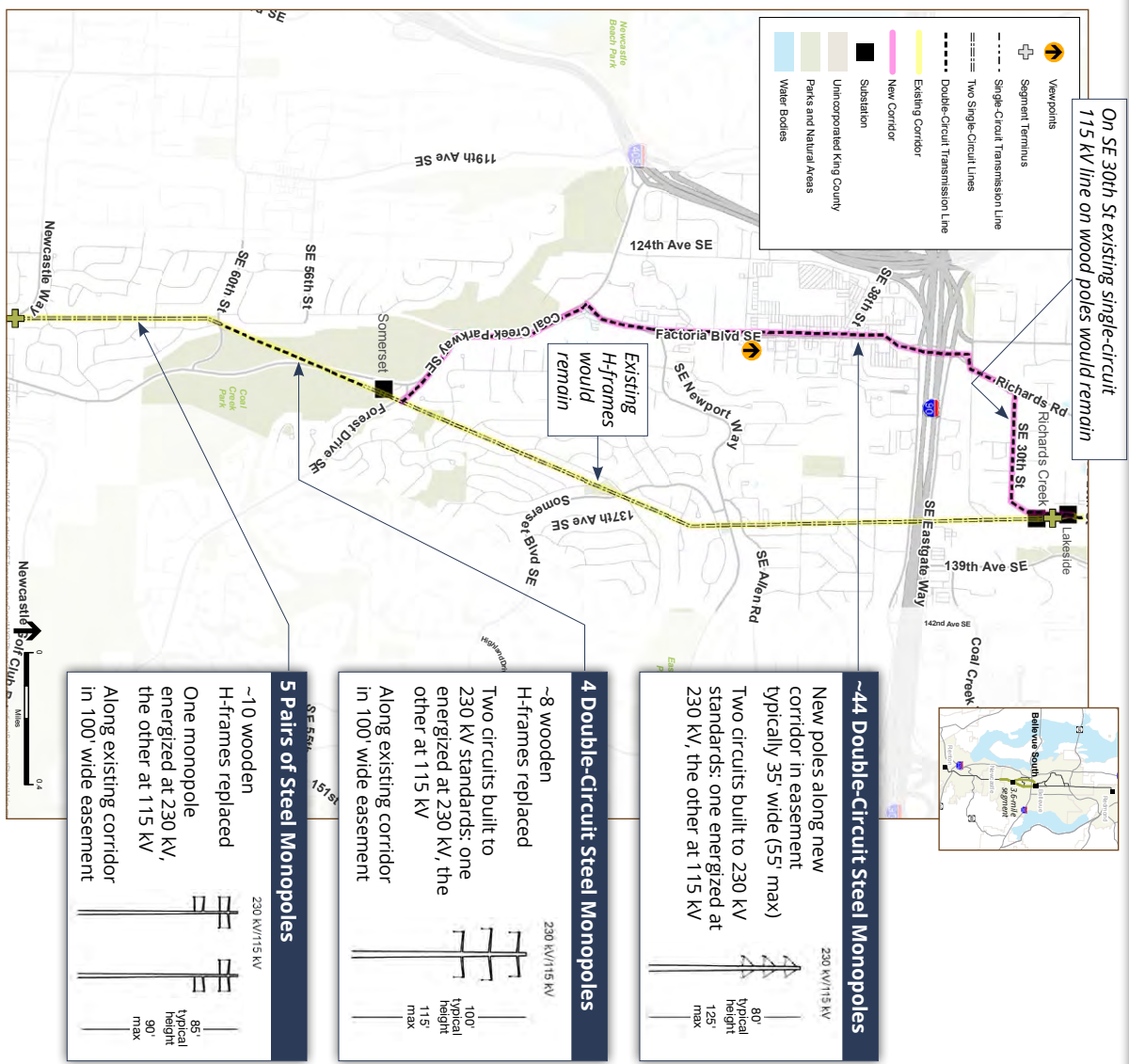
Alt 1: Bellevue South Segment

OAK 1 OPTION

From Factoria Blvd SE looking north



- New easements needed for about 60 properties (about 8 acres) in new corridor
- No houses condemned or demolished — some garages and sheds would need to be moved or demolished
- Clearing for vegetation over 15' in height: 16' from outside transmission wires
- Existing distribution and communication lines along Factoria Blvd SE and Coal Creek Pkwy would be placed underground
- 16-inch Olympic pipeline buried in existing corridor—often in center
- 20-inch Olympic pipeline buried under SE 30th St, Richards Rd, Factoria Blvd SE, and Coal Creek Parkway SE between Richards Creek and Somerset substations
- 20-inch Olympic pipeline buried in existing corridor south of Somerset substation



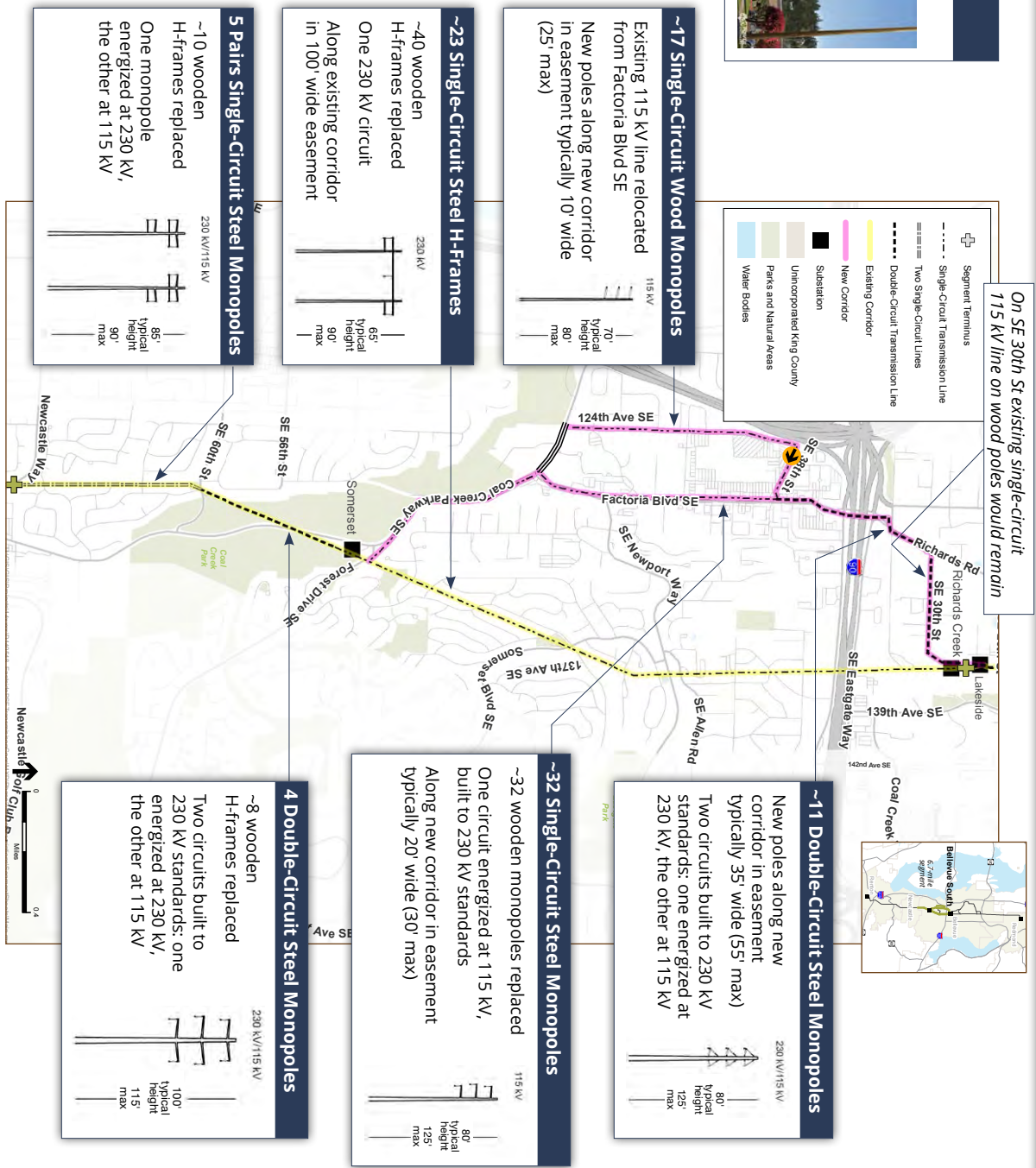
Alt 1: Bellevue South Segment

OAK 2 OPTION

From SE 38th St looking southeast



- New easements needed for about 70 properties (about 10 acres) in new corridor
- No houses condemned or demolished — some garages and sheds would need to be moved or demolished
- Existing lines along Factoria Blvd SE and Coal Creek Pkwy would be placed underground
- Clearing for vegetation over 15' in height: 16' from outside transmission wires
- Clearing for vegetation over 15' in height: 6' from pole on wire-free side along new corridor for single-circuit monopoles
- 16-inch Olympic pipeline buried in existing corridor—often in center
- 20-inch Olympic pipeline buried under SE 30th St, Richards Rd, Factoria Blvd SE, and Coal Creek Parkway SE between Richards Creek and Somerset substations
- 20-inch Olympic pipeline buried in existing corridor south of Somerset substation



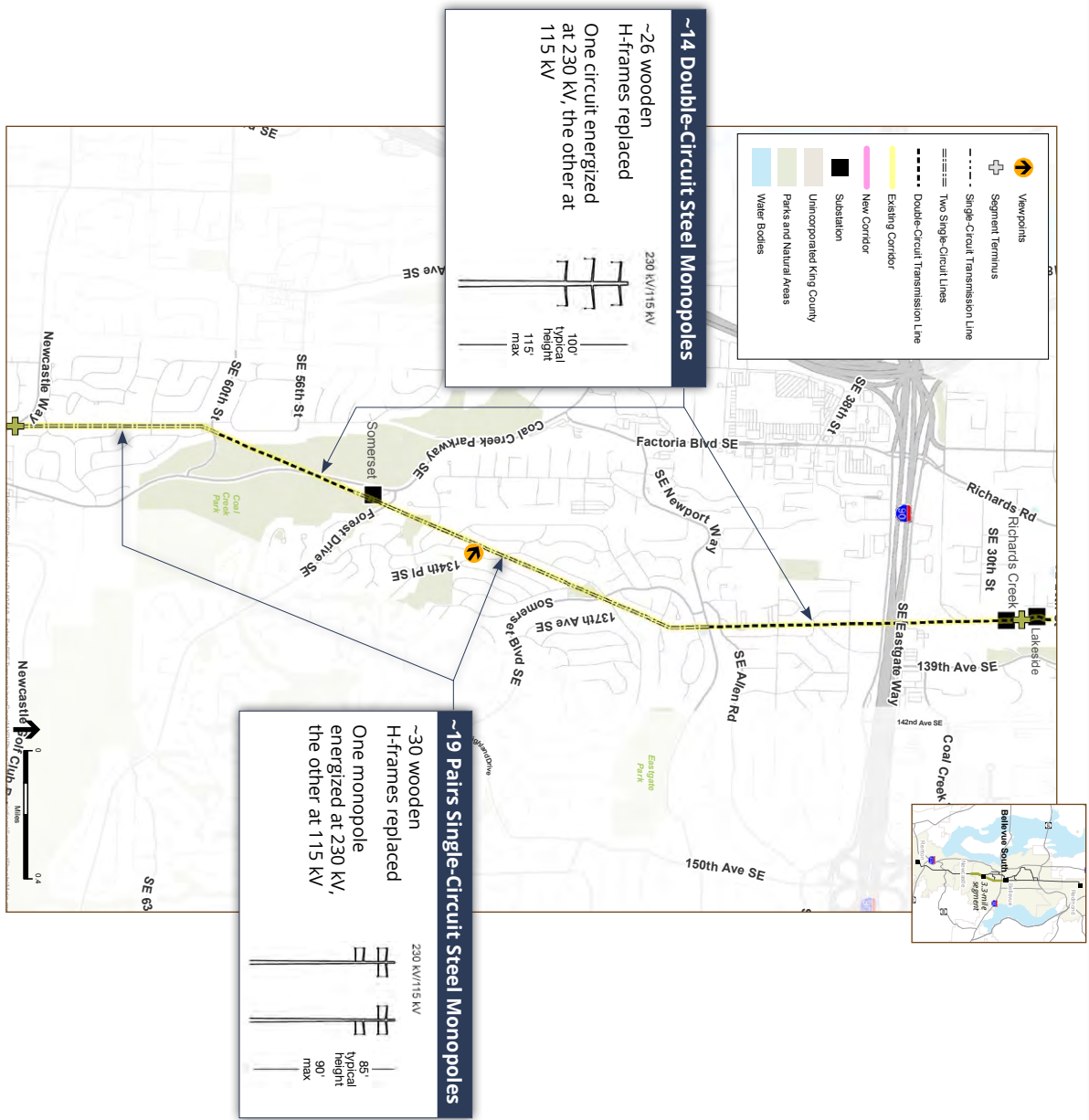
Alt 1: Bellevue South Segment

WILLOW 1 OPTION

From 134th PI SE looking west

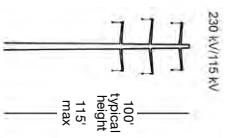


- Segment entirely within PSE's existing 100-foot, 115 KV corridor
- No new easements or property acquisition needed
- Clearing for vegetation over 15' in height: 16' from outside transmission wires
- 16-inch Olympic pipeline buried in existing corridor—often in center
- South of SE Newport Way steel monopoles would be placed in pairs with one on either side of the pipeline
- 20-inch Olympic pipeline buried in existing corridor south of Somerset substation



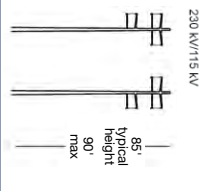
~14 Double-Circuit Steel Monopoles

~26 wooden H-frames replaced
One circuit energized at 230 KV, the other at 115 KV



~19 Pairs Single-Circuit Steel Monopoles

~30 wooden H-frames replaced
One monopole energized at 230 KV, the other at 115 KV



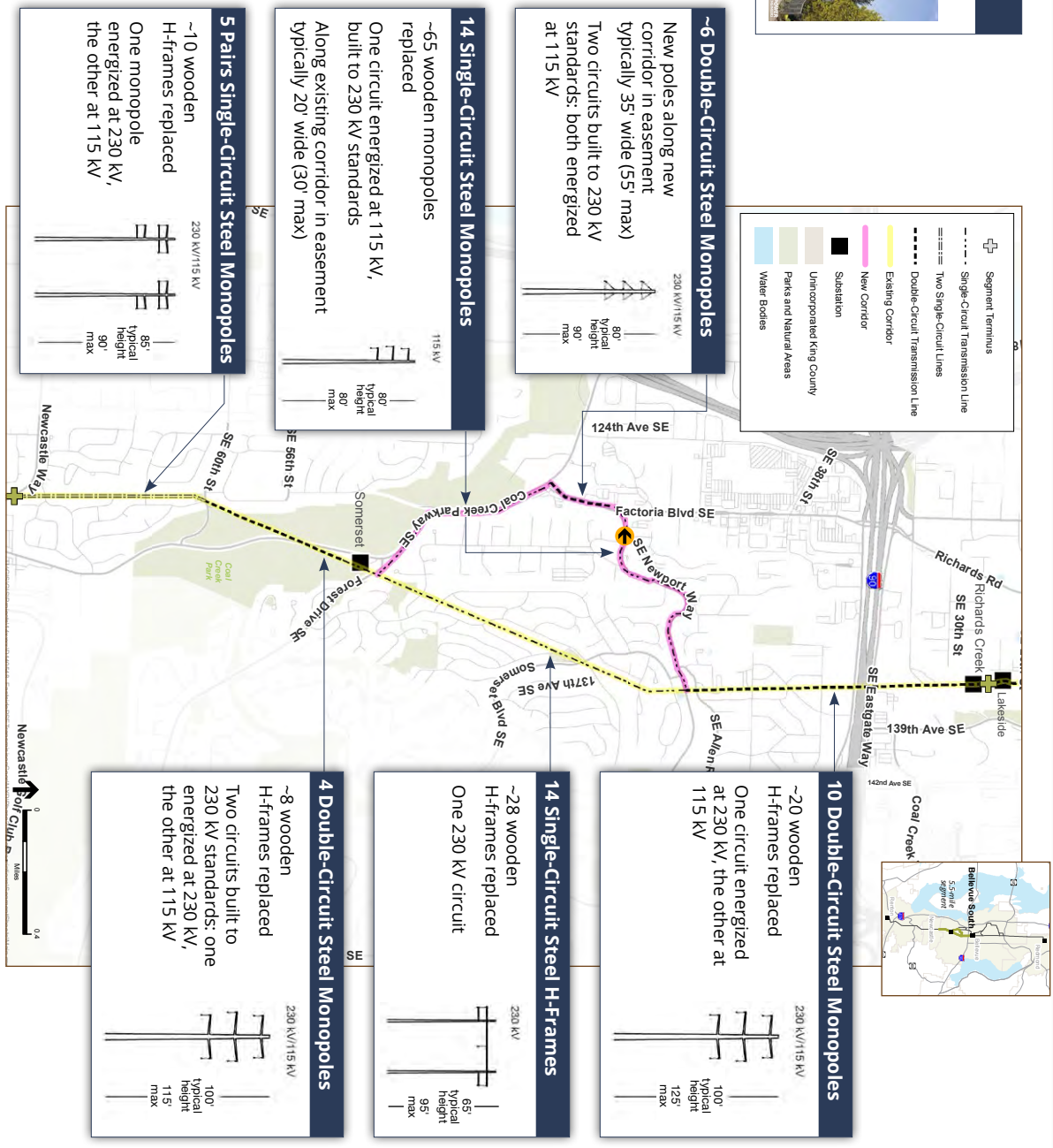
Alt 1: Bellevue South Segment

PSE'S PREFERRED ALIGNMENT—WILLOW 2 OPTION

From SE Newport Way looking west



- New easements needed for about 50 properties (about 6 acres) in new corridor
- No houses condemned or demolished — some garages and sheds would need to be moved or demolished
- Existing lines would be placed underground along Factoria Blvd SE, SE Newport Way and Coal Creek Pkwy
- Clearing for vegetation over 15' in height: 16' from outside transmission wire
- Clearing for vegetation over 15' in height: 6' from pole on wire-free side along new corridor for single-circuit monopoles
- 16-inch Olympic pipeline buried in existing corridor—often in center
- 20-inch Olympic pipeline buried under Factoria Blvd SE, and Coal Creek Parkway SE between Richards Creek and Somerset substations
- 20-inch Olympic pipeline buried in existing corridor south of Somerset substation



Alt 1: Newcastle Segment

PSE'S PREFERRED ALIGNMENT — ALONG EXISTING CORRIDOR

From 128th Ave SE looking north

Existing conditions

Existing Conditions

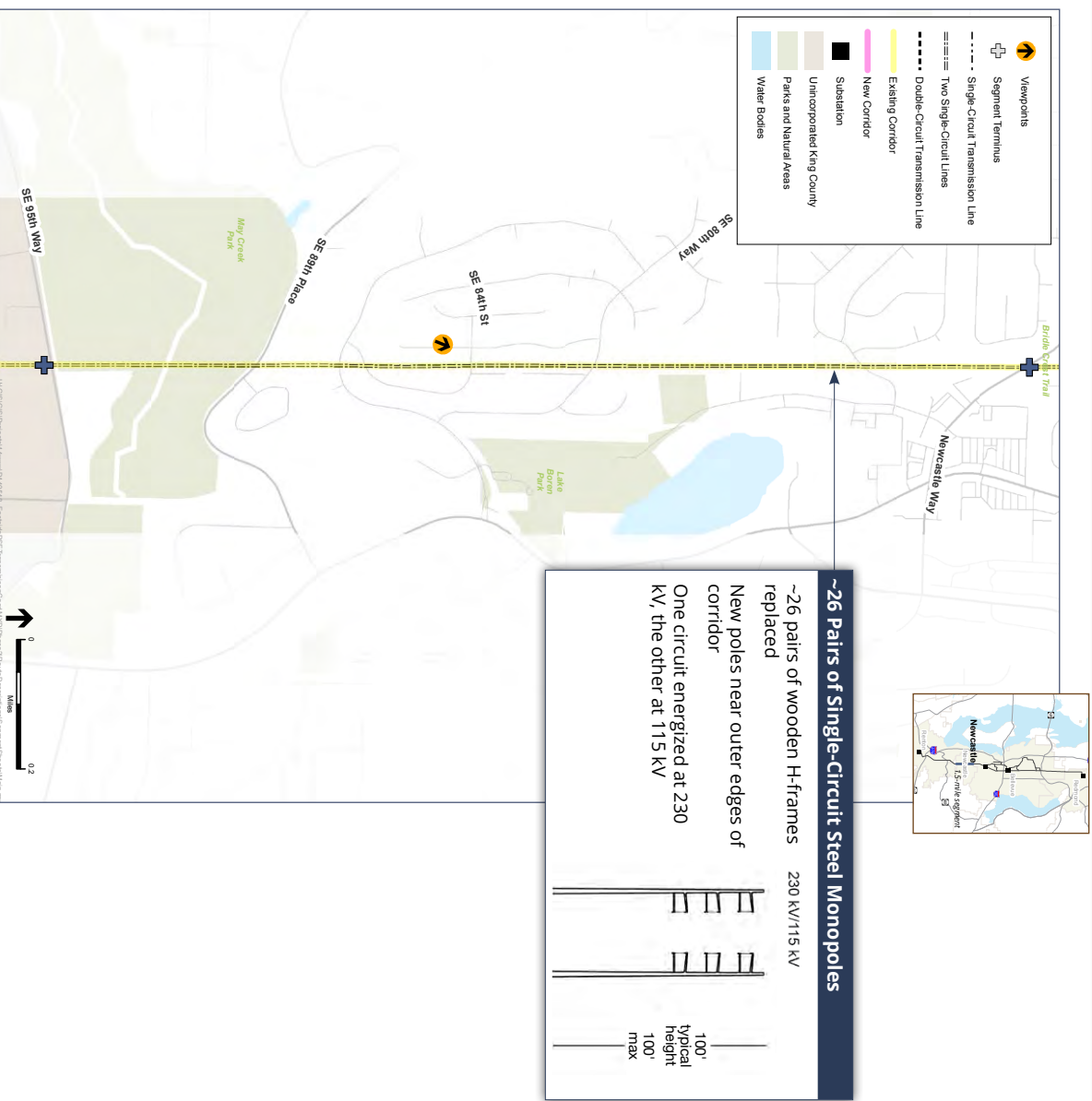


Simulation of proposal

Conceptual Project



- Segment entirely within PSE's existing 100-foot, 115 kV corridor
- No new easements or property acquisition needed
- Clearing for vegetation over 15' in height: 16' from outside transmission wires
- Olympic pipelines buried in the center of existing corridor
- Pole pairs would be placed with one on either side of the pipeline



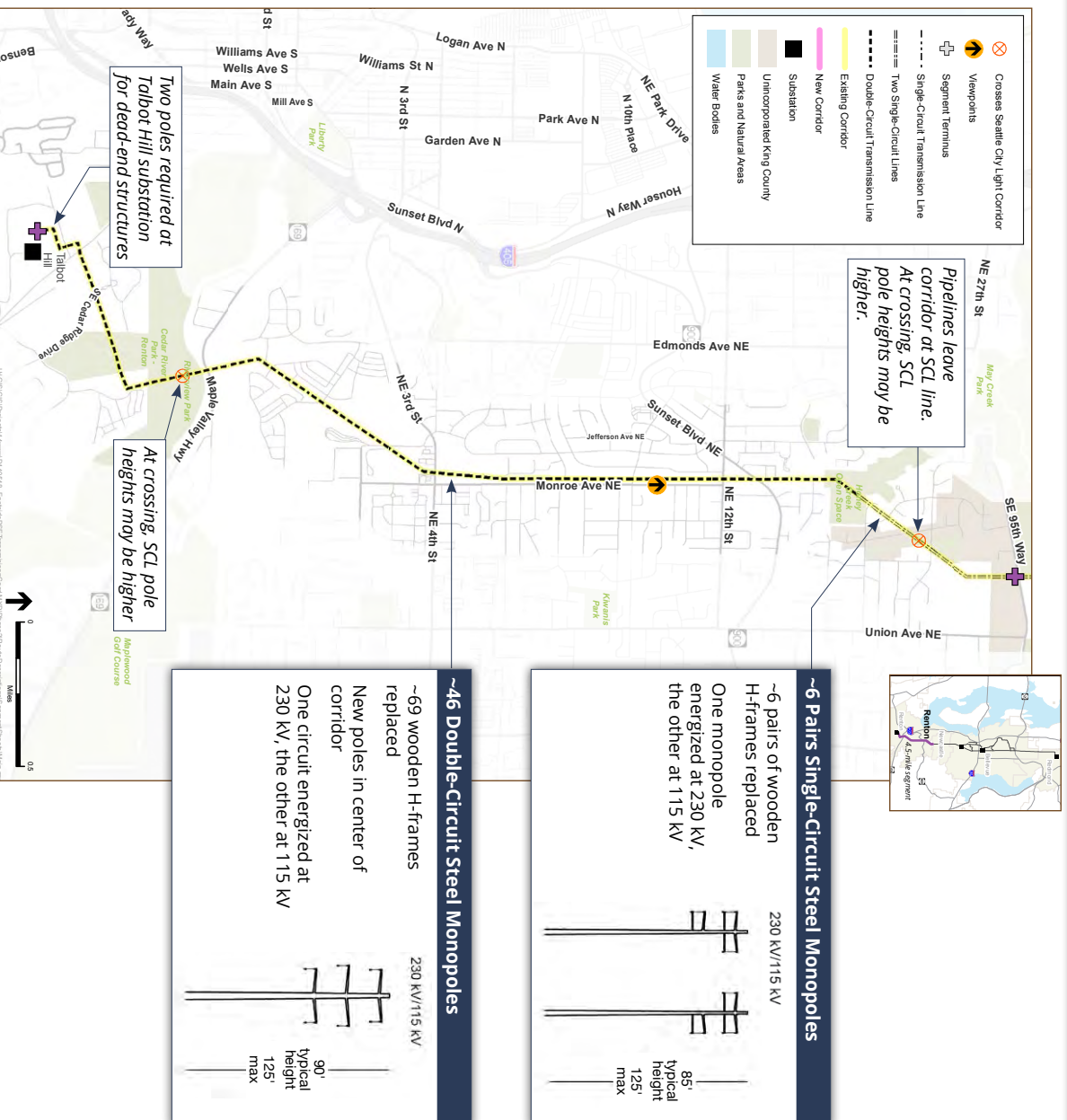
Alt 1: Renton Segment

PSE'S PREFERRED ALIGNMENT — ALONG EXISTING CORRIDOR

View from Monroe Ave NE looking north



- Small portion of this segment in unincorporated King County
- Segment entirely within PSE's existing 100-foot, 115 kV corridor
- No new easements or property acquisition needed
- Clearing for vegetation over 15' in height: 16' from outside transmission wires
- Olympic pipelines buried on one side (east or west) of existing corridor for 0.2 miles



Impacts During Operation

BELLEVUE CENTRAL OPTIONS

POTENTIAL IMPACT	EXISTING CORRIDOR <i>PSE's Preferred Alignment</i>	BYPASS OPTION 1	BYPASS OPTION 2
LAND USE			
Potential inconsistencies with plans and policies	Consistent	Inconsistent	Inconsistent
New easements needed for new corridor	No New Easements	New Easements Needed	New Easements Needed
Shoreline of the state	Not a Shoreline	Shoreline	Shoreline
SCENIC VIEWS & AESTHETIC ENVIRONMENT			
Impacts to visual quality	Low Potential	High Potential	High Potential
Impacts to scenic views	Low Potential	Moderate Potential	Moderate Potential
Viewer sensitivity	Low	High	High
WATER			
Stream and buffer impacts	No Impacts	15 New Stream Crossings	17 New Stream Crossings
Wetland and buffer impacts	Fewer Poles in Wetlands (Benefit)	New Wetland/Buffer Impacts (in 5 Category-1 Wetlands)	New Wetland/Buffer Impacts (in 6 Category-1 Wetlands)
Shoreline management impacts	No Impacts	New Poles in Kelsey Creek Shoreline Jurisdiction	New Poles in Kelsey Creek Shoreline Jurisdiction
PLANTS AND ANIMALS			
Total trees removed	620 Trees	1,790 Trees	1,240 Trees
Significant trees removed	250 Trees	1,230 Trees	930 Trees
Trees removed in critical areas	140 Trees	244 Trees	177 Trees
GHG (METRIC TONS OF CO2e/YEAR)			
GHGs from sequestration loss	8.5 Mt	53 Mt	39 Mt
Fugitive loss of SF6 from new gas-insulated substation equipment	75 Mt	75 Mt	75 Mt
Total GHG losses	121 Mt	165 Mt	151 Mt
RECREATION			
Trees removed at recreation sites	45 Trees	430 Trees	310 Trees
New easements at recreation sites	No New Easements	New Easements Needed	New Easements Needed
HISTORIC & CULTURAL RESOURCES			
Sensitivity for unrecorded resources	Very Low Potential	Very Low Potential (except at Kelsey Creek)	Very Low Potential (except at Kelsey Creek)
New easements needed (i.e., potential for unevaluated resources)	No New Easements	New Easements Needed	New Easements Needed
ECONOMICS			
Loss of ecosystem services through tree removal (e.g., carbon storage, stormwater runoff, etc.)	620 Trees	1,790 Trees	1,240 Trees
EMF (MILLIGAUSS OR MG)			
Calculated magnetic field levels (maximum)	36 Mg	22 Mg	22 Mg
Calculated magnetic field levels (edge of right-of-way)	26 Mg	19 Mg	19 Mg
PIPELINE			
Risk to pipeline safety	No Substantial Change in Risk	No Substantial Change in Risk	No Substantial Change in Risk
Miles of co-location	2.9 Miles (20" pipeline) 2.9 Miles (16" pipeline)	0.91 Miles (20" pipeline) 0.91 Miles (16" pipeline)	0.60 Miles (20" pipeline) 0.60 Miles (16" pipeline)

No or Negligible Adverse Impact (in some cases, beneficial)
 Potential Impact but Not Considered Significant (or can be mitigated)
 Potentially Significant Impact

Impacts During Operation

BELLEVUE SOUTH OPTIONS

POTENTIAL IMPACT	OAK 1	OAK 2	WILLOW 1	WILLOW 2 <i>PSE's Preferred Alignment</i>
LAND USE				
Potential inconsistencies with plans and policies	Consistent	Inconsistent	Consistent	Inconsistent
New easements needed for new corridor	New Easements Needed	New Easements Needed	No New Easements	New Easements Needed
Shoreline of the state	Not a Shoreline	Not a Shoreline	Not a Shoreline	Not a Shoreline
SCENIC VIEWS & AESTHETIC ENVIRONMENT				
Impacts to visual quality	Low Potential	Low Potential	High Potential	Low Potential
Impacts to scenic views	Low Potential	Low Potential	Moderate Potential	Low Potential
Viewer sensitivity	Moderate	Moderate/High	High	Moderate/High
WATER				
Stream and buffer impacts	Minor Impacts New Stream Crossings	Minor Impacts New Stream Crossings	Minor Impacts No New Stream Crossings	Minor Impacts New Stream Crossings
Wetland and buffer impacts	Minor Impacts New Buffer Impacts	Minor Impacts New Stream Crossings	Minor Impacts No New Stream Crossings	Benefit Fewer Poles in Buffers
Shoreline management impacts	No Impacts	No Impacts	No Impacts	No Impacts
PLANTS AND ANIMALS				
Total trees removed	1,040 Trees	1,610 Trees	1,030 Trees	1,660 Trees
Significant trees removed	670 Trees	1,066 Trees	450 Trees	970 Trees
Trees removed in critical areas	2 Trees	3 Trees	4 Trees	4 Trees
GHG (METRIC TONS OF CO2e/YEAR)				
GHGs from sequestration loss	20 MT	28 MT	14 MT	27 MT
Fugitive loss of SF6 from new gas-insulated substation equipment	75 MT	75 MT	75 MT	75 MT
Total GHG losses	132 MT	140 MT	126 MT	139 MT
RECREATION				
Trees removed at recreation sites	140 Trees	195 Trees	95 Trees	190 Trees
New easements at recreation sites	New Easements Needed	New Easements Needed	No New Easements	New Easements Needed
HISTORIC & CULTURAL RESOURCES				
Sensitivity for unrecorded resources	Very Low Potential	Very Low Potential	Very Low Potential	Very Low Potential
New easements needed (potential for unrecorded resources)	New Easements Needed	New Easements Needed	No New Easements	New Easements Needed
Underground work proposed (potential for unrecorded resources)	Yes	Yes	No	No
ECONOMICS				
Loss of ecosystem services through tree removal (e.g., carbon storage, stormwater runoff, etc.)	1,040 Trees	1,610 Trees	1,030 Trees	1,660 Trees
EMF (MILLIGAUSS OR mG)				
Calculated magnetic field levels (maximum)	88-174 mG	27-157 mG	41-88 mG	53-157 mG
Calculated magnetic field levels (edge of right-of-way)	62-127 mG	23-96 mG	38-62 mG	40-92 mG
PIPELINE SAFETY				
Risk to pipeline safety	No Substantial Change in Risk	No Substantial Change in Risk	No Substantial Change in Risk	No Substantial Change in Risk
Miles of co-location	3.2 Miles (20" pipeline) 3.3 Miles (16" pipeline)	5.3 Miles (20" pipeline) 3.3 Miles (16" pipeline)	1.2 Miles (20" pipeline) 3.3 Miles (16" pipeline)	2.1 Miles (20" pipeline) 3.3 Miles (16" pipeline)

- No or Negligible Adverse Impact (in some cases, beneficial)
- Potential Impact but Not Considered Significant (or can be mitigated)
- Potentially Significant Impact

Public Health & Safety

KEY FINDINGS

Topics Studied

In Phase 2 Draft EIS

- Magnetic Fields
- Pipeline Safety

Topics Covered

In Phase 1 Draft EIS

- Electric Fields
- Earthquakes and Lightning
- Corona Ionization
- Hazardous Materials

Magnetic Fields

- Modeled and calculated at 35 representative locations along the project alignment
 - » directly under the line where exposure is greatest
 - » at the edge of the corridor, closer to where people live or work
- Industry guidelines recommend public exposure levels not exceed 2,000 to 9,040 mG (varies based on the standard used)
- Calculated magnetic field levels are **well below industry guidelines**, ranging from 19 to 174 mG
- Along the existing corridor, all segments and options of the **new project would yield a decrease** of magnetic field levels, compared to existing conditions and the No Action Alternative because
 - » new poles would be taller, placing the wires farther from the ground
 - » new wires are stacked vertically rather than horizontally, creating a narrower magnetic field profile
- Along new corridors, magnetic field levels would increase compared to existing conditions and the No Action Alternative



Renton

Pipeline Safety

The project could increase the risk of damage to the two underground pipelines within PSE's existing corridor that transport diesel, jet fuel and gasoline.

Main Sources of Potential Impacts

- **Outside force/excavation**
Pipeline damage due to construction and excavation activities
- **Electrical interference**
Accelerated corrosion of pipeline due to elevated electric currents causing fault or arcing damage

Probabilistic Risk Assessment

- The EIS depicts the change in risk due to construction and operation of the project relative to existing conditions, with risk defined as:

$$\text{RISK} = \text{LIKELIHOOD} \times \text{IMPACT}$$

Event Probability Severity of Consequences

- Where field verifiable data was unavailable, conservative assumptions were used—the difference between existing conditions and the proposed project are likely overstated
- In general, **the risk of a pipeline incident is extremely low**
- However, if an incident did occur (such as a fire or explosion), the **consequences could be severe**, including loss of life and damage to property and natural resources

Key Results

- Pipeline damage due to electrical interference could be slightly higher in some locations — testing, monitoring, engineering analysis, and implementation of mitigation measures would lower these risks
- The likelihood of an individual at a specific location being fatally injured is 1 in 4.5 million over a 1-year period — an additional risk of 1 in 51 million above existing conditions. Both are very low probabilities of risk.
- The likelihood of a pipeline rupture and fire would remain low with no substantial change in risk from existing conditions

Mitigating Impacts

- To minimize the potential for electrical interference, PSE could utilize optimized conductor geometry to produce field cancellation and operate both circuits at 230 kV upon project start-up
- To reduce the potential for external corrosion, PSE could model the final design for instances where additional protection is needed and Olympic Pipeline could conduct field monitoring, testing, and mitigation (such as grounding mats)
- To reduce the potential for outside force/excavation, PSE could field verify the distance between the pipeline and pole footings prior to construction and ensure that Olympic representatives are on-site to monitor construction activities near the pipeline
- Additional measures are found in Section 3.9.7 of the Phase 2 Draft EIS



Newcastle

Scenic Views & the Aesthetic Environment

KEY FINDINGS

Definitions

Scenic Views are views considered special attributes of the study area and region

- » Mount Rainier
- » the Cascade and Olympic Mountains
- » Lake Washington and other water bodies
- » downtown Seattle and Bellevue skylines



Aesthetic Environment is what influences people's perception of the world—including both the natural environment and the built environment



Potential Impacts

Impacts were examined separately for scenic views and the aesthetic environment

- Visual quality could change due to
 - » vegetation removal
 - » changes to topography
 - » incompatibility with the surrounding natural and built environments
 - » inconsistent project height and form
 - » introduction of visual clutter
- **No significant impacts on scenic views** would occur due to increased pole height, poles in new locations or increased pole diameter
- **Significant impacts on the aesthetic environment would occur in three locations**
 - » The Bellevue Central Segment, along the Bypass Options 1 and 2 (along Bel-Red Road, Lake Hills Connector and Richards Road)—not PSE's preferred route
 - » In a portion of the Willow 1 Option, in the Somerset neighborhood—not PSE's preferred route
 - » Along most of the Newcastle Segment (north of the May Creek ravine)—PSE's preferred route
- Significant impacts are primarily due to
 - » placement in a new corridor, tree removal, and viewer sensitivity (Bypass Options)
 - » high sensitivity and substantial contrast with the aesthetic environment (Willow 1 Option and Newcastle Segment)

Mitigating Impacts

To minimize impacts on visual resources, PSE could incorporate the following measures (and others)

- Limiting vegetation disturbance and re-vegetating with species compatible with clearance requirements
- Screening utility components with landscaping or fencing
- Putting portions of the transmission and distribution lines underground
- Changing the pole design (e.g., height, spacing, and location) to be more compatible with surrounding land uses



Historic & Cultural Resources

KEY FINDINGS

Management and Protection

- Eligible historic and cultural resources can be listed on the National Register of Historic Places (NRHP)
- Resources can also be protected as part of the King County Historic Preservation Program, at the local municipal level, or by affected tribes
- Historic and cultural resources can be eligible for listing in the NRHP if they
 - » meet the minimum age threshold;
 - » have integrity of location, design, setting, materials, workmanship or feeling; **and**
 - » meet at least one of the eligibility criteria defined by the National Park Service



Identification

- **Seven historic resources** recommended eligible, determined eligible, or register-listed
 - » Eastside transmission corridor
 - » Somerset neighborhood—a potential historic district
 - » Newcastle Cemetery
 - » Mt. Olivet Cemetery in Renton
 - » Safeway Distribution Center truck repair building on Bel-Red Road
 - » Wilburton Trestle in Bellevue
 - » Twin Valley Dairy barn at Kelsey Creek Park
- **Hundreds of unevaluated historic resources** meet the minimum threshold of 45 years in age or older, mostly along new corridor segments—the results of a separate study and consultation process for these unevaluated resources will be included in the Final EIS
- **One archaeological resource** related to the grade of the former Columbia & Puget Sound Railroad in Renton
- Young landforms make additional archaeological resources unlikely except along Kelsey Creek and the Cedar River
- PSE will conduct a site-specific historic property inventory and archaeological survey before any construction or ground-disturbing activities

Mitigating Impacts

- Potential impacts can often be mitigated based on consultation with the Department of Archaeology and Historic Preservation, King County and any affected tribes. Strategies include
- Completing the inventory and consultation process for unevaluated resources
 - Conducting additional field work, including subsurface testing
 - Through consultation, developing site-specific mitigation measures
 - Adjusting specific pole locations to avoid impacts
 - Preparing an Inadvertent Discovery Plan to address any new resources encountered during construction



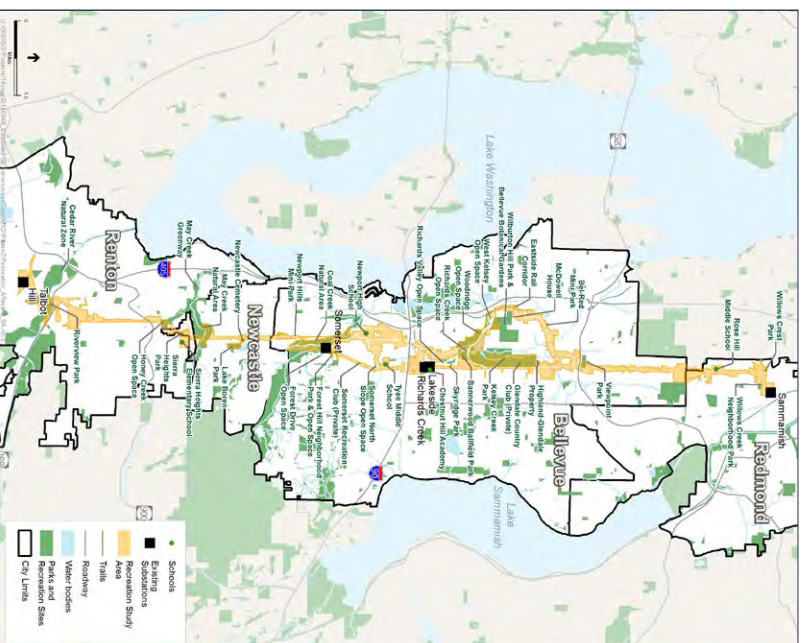
Parks & Recreation

KEY FINDINGS

Recreation Resources on the Eastside

- PSEs project would pass through or near
- parks, play fields and playgrounds
- trails, open spaces and natural areas
- schools, community centers and private recreation facilities

Informal recreation (jogging, cycling, etc.) occurs along streets that cross or run parallel to the corridor



Potential Impacts

Potentially Significant Impacts

- PSE would need to acquire easements on publicly-owned recreation sites in Bellevue for
 - » Bypass Option 1
 - » Bypass Option 2
 - » Oak 1 Option
 - » Oak 2 Option
 - » Willow 2 Option—PSE's preferred alignment

In the City of Bellevue, acquisition of easements on publicly owned recreation sites is not consistent with City plans and policies and **therefore would be a significant impact**

Not Significant Potential Impacts

- Most impacts from construction and operation would not be considered significant
- Park users might notice tree clearings, taller poles and poles in new locations after construction
- The extent of operational impacts would vary, but not be considered significant in any location—parks and recreation sites would offer the same opportunities as exist today
- Construction could adversely affect recreation through temporary loss of use of a recreation site and construction-generated noise

Mitigating Impacts

To minimize impacts, PSE could incorporate the following measures (and others)

- Undergo a public review process for the conversion to non-recreational use of public park lands and facilities
- Place poles farther into the road right-of-way to avoid new easements
- Avoid placing poles and other infrastructure within recreation sites where none are currently located
- Limit vegetation disturbance during both construction and operation, and restore areas temporarily cleared for construction
- Notify park owners and managers in advance of work

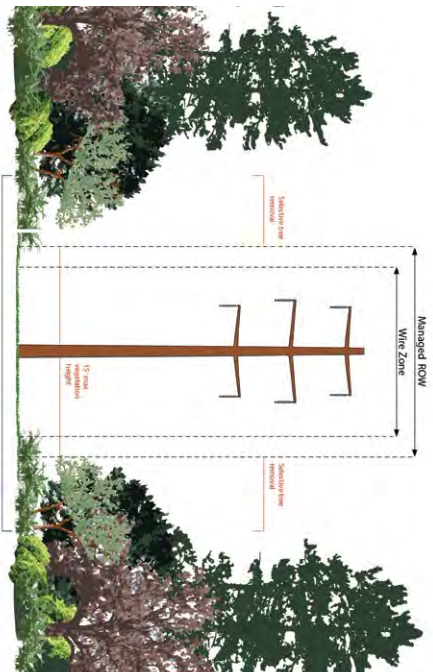
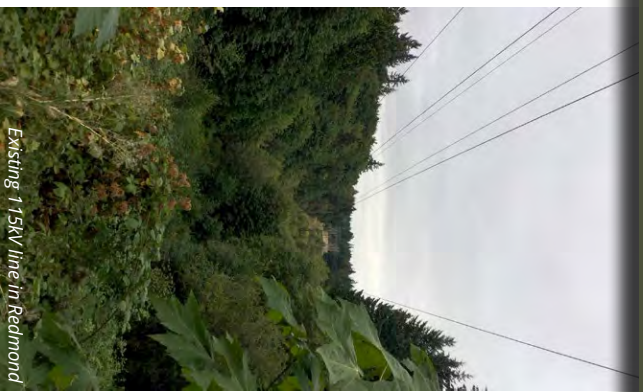
PSE could also post signs at recreation sites and trail heads to alert users of upcoming construction



Coal Creek Trail

Tree Canopy

KEY FINDINGS



How PSE Manages Vegetation in Transmission Line Corridors

- **Tree canopy coverage** relates to many of the resource topics analyzed in the EIS because of the multiple benefits it provides to
 - » Scenic Views & the Aesthetic Environment
 - » Water Resources
 - » Plants & Animals
 - » Greenhouse Gases
 - » Recreation
- » Ecosystem Services (part of the Economics analysis)

- Within the Managed Right-of-Way for 230 kV transmission lines, PSE generally removes any vegetation that matures to a height of more than 15 feet to comply with North American Electric Reliability Corporation (NERC) standards intended to protect public safety and the reliability of electrical infrastructure
- Some trees outside the Managed Right-of-Way could also be removed to maintain safe wire clearance

- At a given location, PSE could choose to trim or prune a tree rather than remove it as long as safe conditions are maintained—for the EIS analysis, all trees 15 feet or taller within the Managed Right-of-Way were assumed to be removed as a result of the project

Tree Clearing

- Depending on the options and routes selected, the number of trees removed would range from about 3,600 to 5,400 trees
- PSE's preferred alignment would require removing approximately 4,200 trees

Trees Potentially Removed

based on field survey of tree species, height and diameter—significant trees defined by each jurisdiction

Segments	Significant Trees	Total Potentially Removed
Redmond	510	630
Bellevue North	190	510
Bypass 1		1,230
Bypass 2		930
Existing Corridor	250	620
Oak 1	670	1,040
Oak 2		1,100
Willow 1	450	1,030
Willow 2		970
Newcastle	35	300
Renton	250	350
Richards Creek Substation	110	170

Bold segments make up PSE's Preferred Alignment

Mitigating Impacts

- To mitigate for tree removal, PSE would coordinate with the Partner Cities to plant replacement trees nearby or off-site, or to pay into a fee-in-lieu program

What's Next?

After the Phase 2 Draft Environmental Impact Statement

The purpose of the Energize Eastside Environmental Impact Statement (EIS) is to provide environmental review of Puget Sound Energy's (PSE) proposed Energize Eastside project, consistent with the requirements of the Washington State Environmental Policy Act (SEPA). The Energize Eastside EIS is being led by the City of Bellevue in cooperation with the partner cities of Kirkland, Newcastle, Redmond and Renton.

LOCAL PERMITTING PROCESS

Following publication of the Final EIS, PSE will need to obtain land use and construction permits from each of the five jurisdictions where the Energize Eastside project is proposed to be built: Bellevue, Newcastle, Renton, Redmond and unincorporated King County. PSE would not need permits from the City of Kirkland since no part of the proposed project would be built within its boundaries.

PHASE 2 DRAFT EIS

The Phase 2 Draft EIS was published on **May 8, 2017**. Public comments will be accepted on the Phase 2 Draft EIS until **June 21, 2017**. After the close of the comment period, the next step in the process is preparation of the Final EIS. The Final EIS will take into account—and will include responses to—all comments submitted on the Phase 1 and Phase 2 Draft EISs.

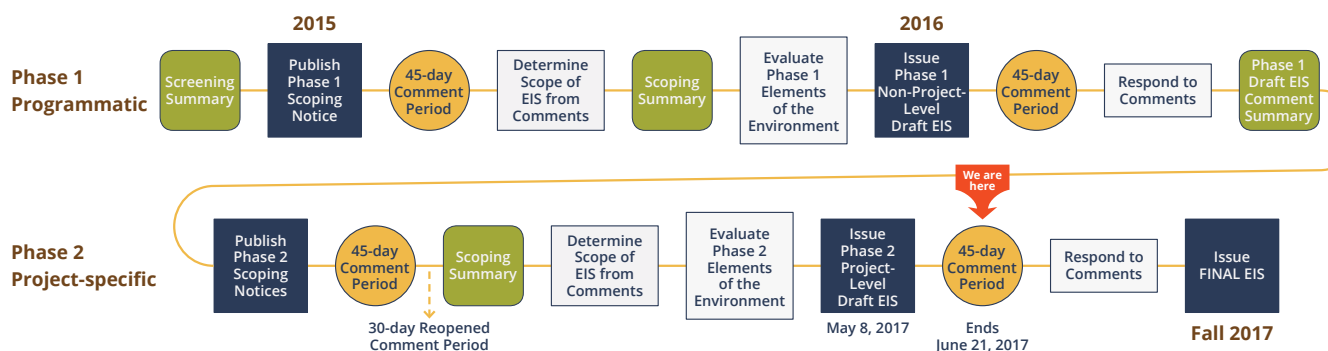
Each of the five jurisdictions has their own permitting process, as shown on the following pages. From the cities of Bellevue and Renton, PSE may need Shoreline Conditional Use Permits which would also be reviewed by the Washington State Department of Ecology. For any construction in a wetland PSE would also need a 404 permit issued by the US Army Corps of Engineers.

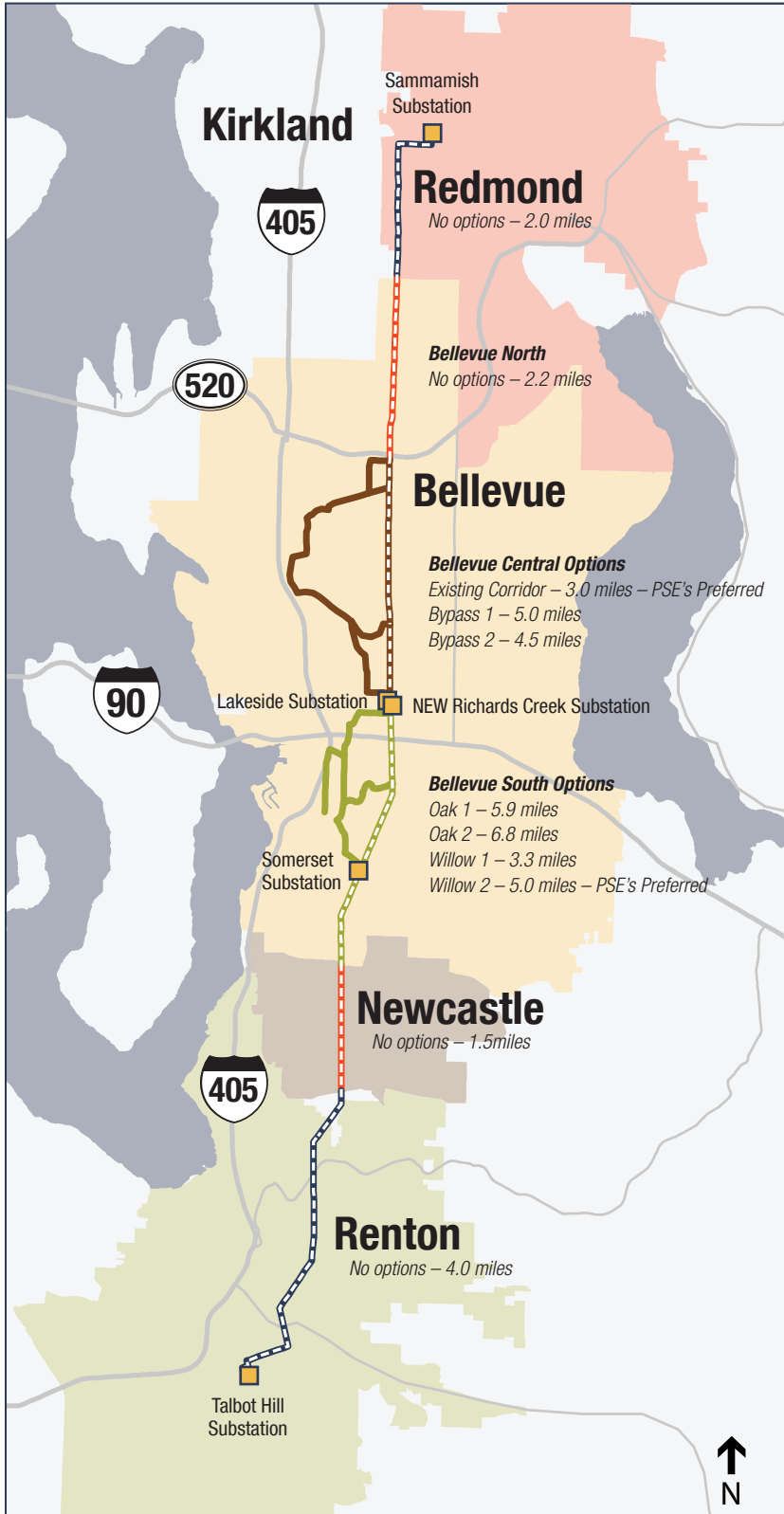
FINAL EIS

The Final EIS is expected to be completed in late 2017. **The Final EIS is a reference document—not a construction permit.** It will identify potential adverse environmental impacts associated with the Energize Eastside project alternatives, and provide recommended mitigation measures for public agencies to consider during the permitting process.

Other entities such as the Washington Utilities and Transportation Commission (WUTC), Bonneville Power Administration (BPA), North American Electric Reliability Corporation (NERC), and Federal Energy Regulatory Commission (FERC) would not be involved in local construction permitting. They would however be involved in setting utility rates and regulating PSE's system to ensure it is operating properly.

EIS Preparation Process





Dashed portions represent existing corridor

WHAT IS ENERGIZE EASTSIDE?

Energize Eastside is PSE's proposal to build a new electric substation and approximately 18 miles of high capacity electric transmission lines from Redmond to Renton.

For more information visit EnergizeEastsideEIS.org

CONTACT INFORMATION

City of Bellevue

Carol Helland, Environmental Coordinator
Heidi Bedwell, Energize Eastside EIS Project Manager
(425) 452-4862
HBedwell@bellevuewa.gov

City of Kirkland

Jeremy McMahan
Development Services Planning Manager
(425) 587-3229
JMcMahan@kirklandwa.gov

City of Newcastle

Thara Johnson
Interim Community Development Director
(425) 649-4143 x127
Tharaj@ci.newcastle.wa.us

City of Redmond

Catherine Beam
Principal Planner
(425) 556-2429
CBeam@redmond.gov

City of Renton

Jennifer Henning
Planning Director
(425) 430-7286
JHenning@Rentonwa.gov

Permit Process flow chart placeholder - Redmond permit process is currently being revised