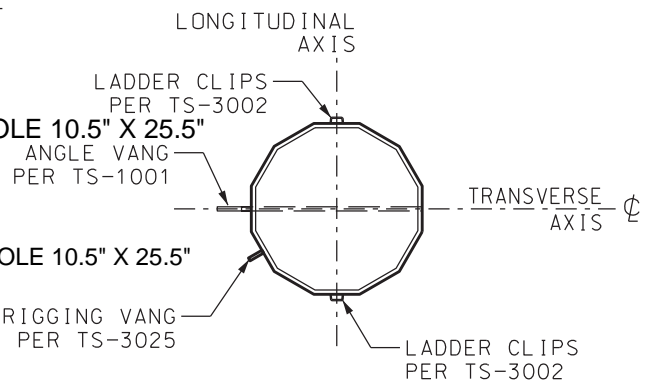


SECTION A-A



SECTION B-B

THIS STRUCTURE TO BE USED ON THESE LINES

TALBOT HILL - RICHARDS CREEK #1 230KV	SAP W.O. #: 111016747
TALBOT HILL - RICHARDS CREEK #2 230KV	SAP W.O. #: 111016749
SAMMAMISH - RICHARDS CREEK #1 230KV	SAP W.O. #: 111016750
SAMMAMISH - RICHARDS CREEK #2 230KV	SAP W.O. #: 111016752

ENERGIZE EASTSIDE 230KV LINE 0°-10° TANGENT DELTA STRUCTURE SCT10			
PUGET SOUND ENERGY ELECTRIC SYSTEM ENGINEERING	CAD	C. MANOS	DRAWING NO
	ENGINEER	C. SCRIMA	TB-0519
	APPROVAL	A. BOSTON	SAP W.O. #: SEE TABLE
DATE	5/12/17	NOT TO SCALE	
		SHEET	2 OF 4

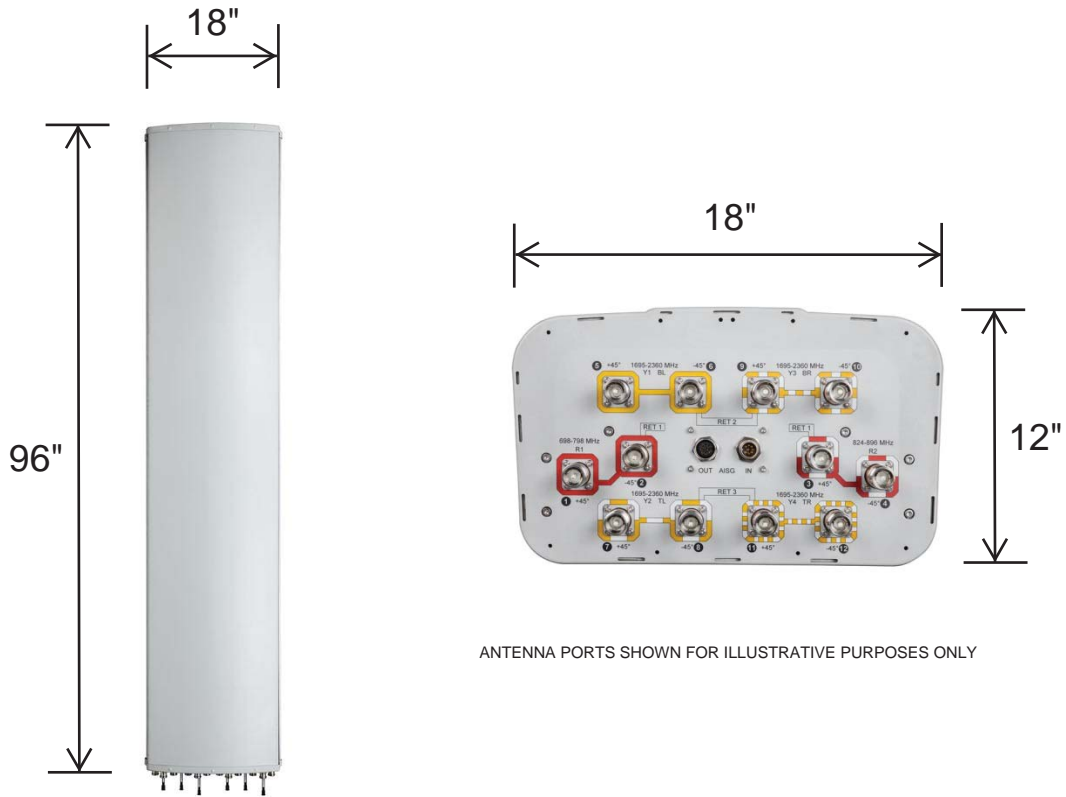
DESIGN HORIZONTAL SPAN - 800'
 DESIGN VERTICAL SPAN - 1050'
 MAXIMUM LINE ANGLE - 10°
 MINIMUM LINE ANGLE - 0°

Plotted: \$DATE\$ @ \$TIME\$ \$USERS\$ \$FILES\$

PSE TEMPLATE ANTENNA

96" (L) x 18" (W) x 12" (D)

APPROX. 100LBS (45.36 KG)

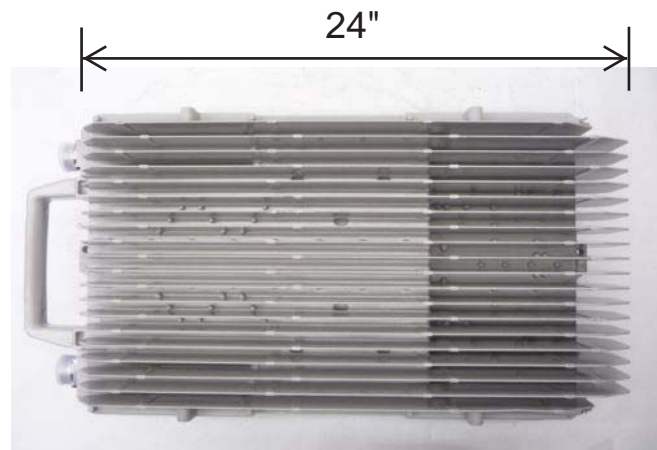
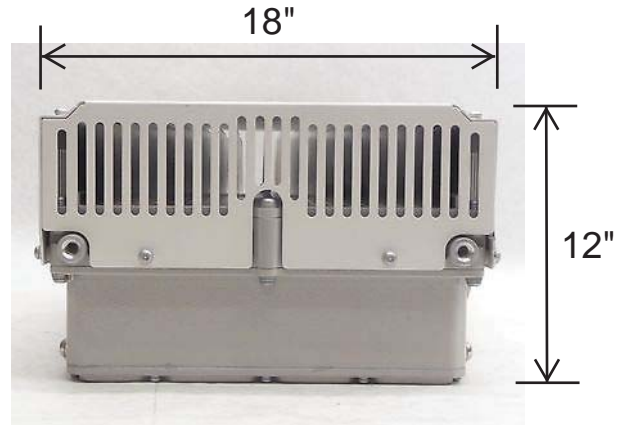
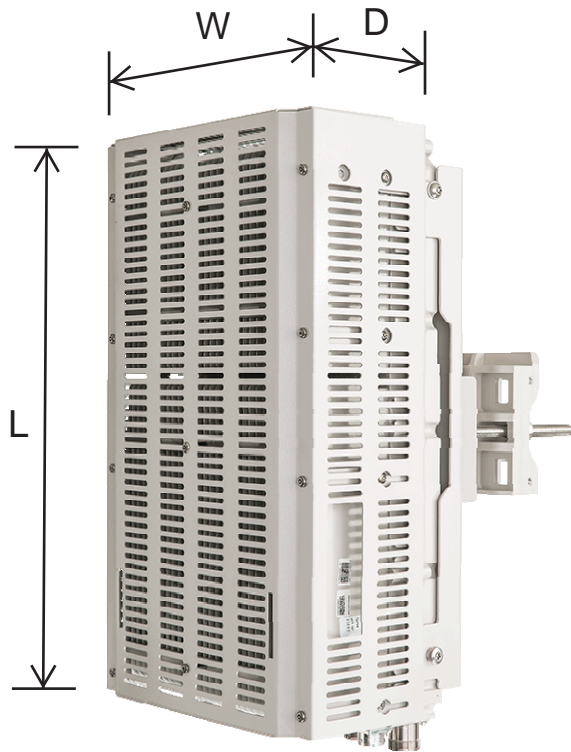


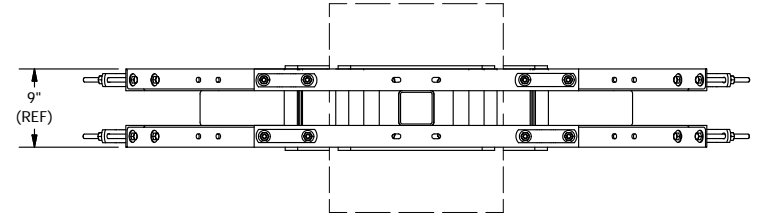
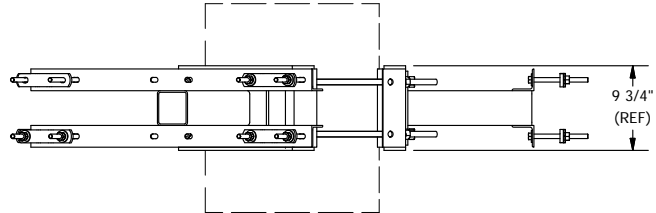
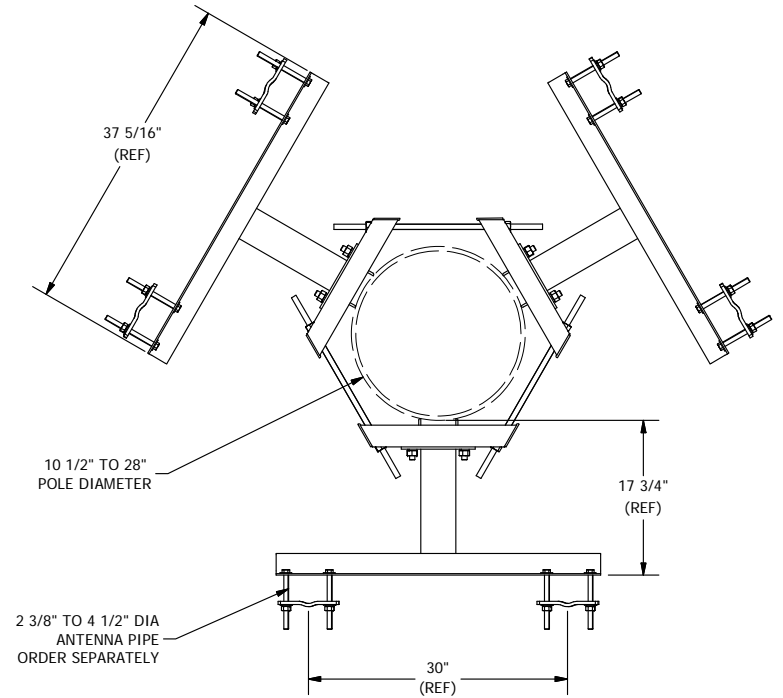
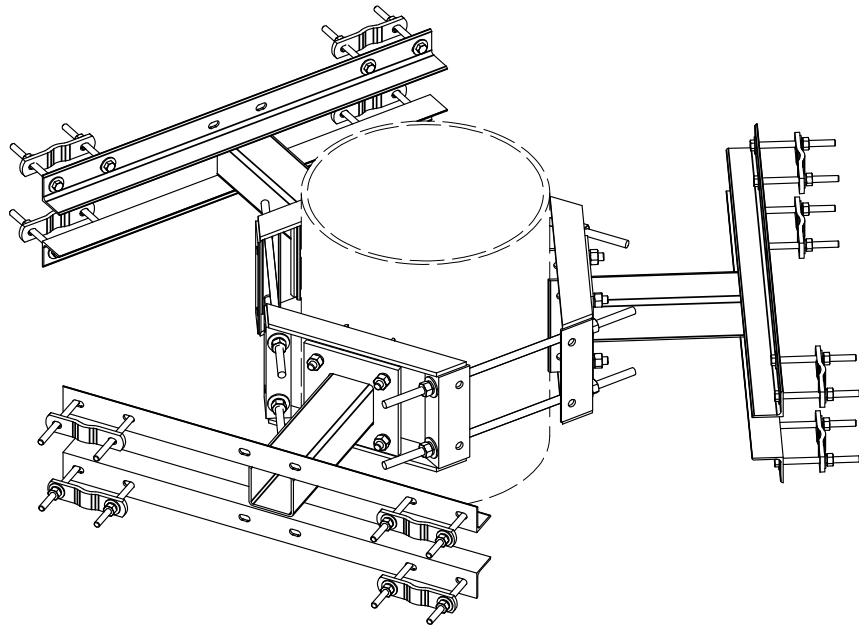
ANTENNA PORTS SHOWN FOR ILLUSTRATIVE PURPOSES ONLY

PSE TEMPLATE REMOTE RADIO UNIT

24" (L) x 18" (W) x 12" (D)

APPROX. 25 LBS (11.34 KG)





TOLERANCE NOTES

**TOLERANCES ON DIMENSIONS, UNLESS OTHERWISE NOTED ARE:
 SAWED, SHEARED AND GAS CUT EDGES (± 0.030)
 DRILLED AND GAS CUT HOLES (± 0.030) - NO CONING OF HOLES
 LASER CUT EDGES AND HOLES (± 0.010) - NO CONING OF HOLES
 BENDS ARE $\pm 1/2$ DEGREE
 ALL OTHER MACHINING (± 0.030)
 ALL OTHER ASSEMBLY (± 0.060)**

PROPRIETARY NOTE:
 THE DATA AND TECHNIQUES CONTAINED IN THIS DRAWING ARE PROPRIETARY INFORMATION OF VALMONT
 INDUSTRIES AND CONSIDERED A TRADE SECRET. ANY USE OR DISCLOSURE WITHOUT THE CONSENT OF
 VALMONT INDUSTRIES IS STRICTLY PROHIBITED.

DESCRIPTION
**ANGLE STANDOFF ARM
 MONOPOLE ASSEMBLY**

CPD NO. 4924	DRAWN BY KC8 5/22/2012	ENG. APPROVAL
CLASS 81	SUB 01	DRAWING USAGE CUSTOMER
CHECKED BY CEK 8/17/2012		

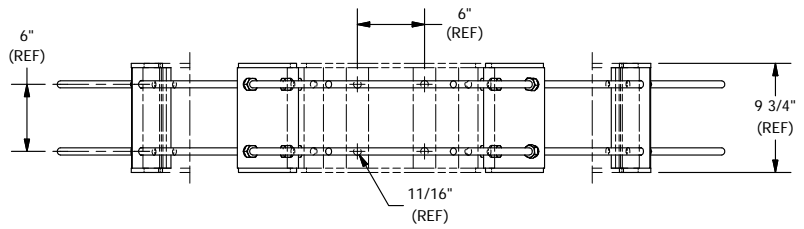
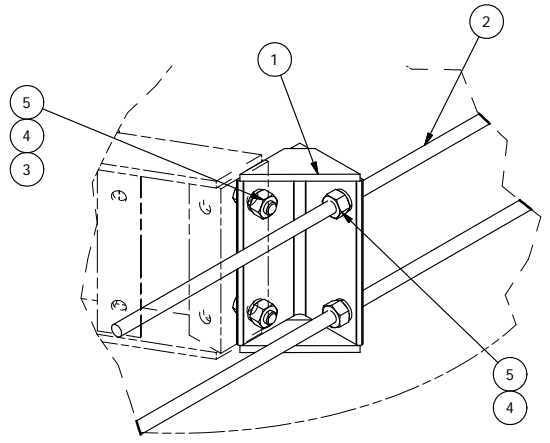
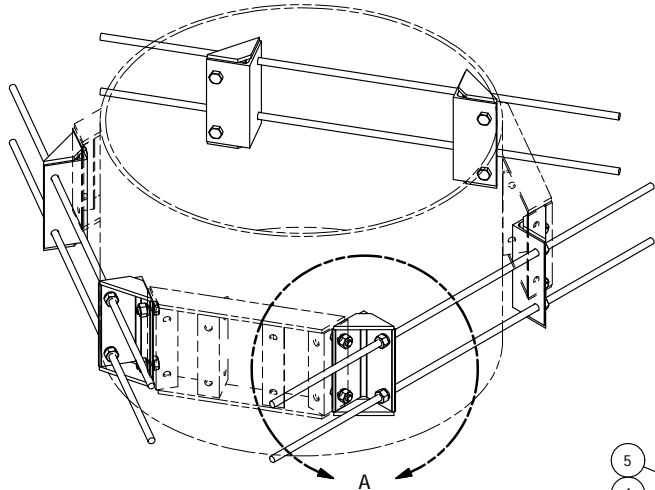
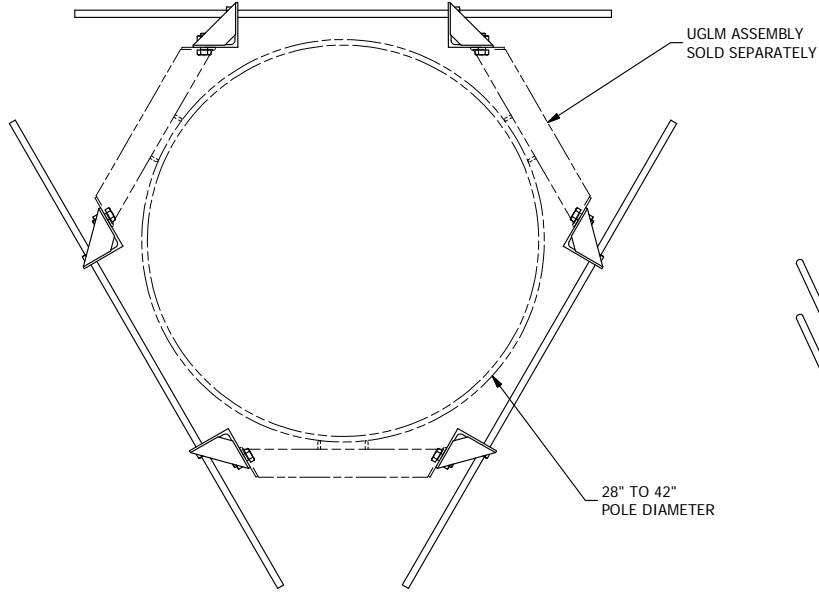
SITE PRO 1
 A valmont COMPANY

Locations:
 New York, NY
 Atlanta, GA
 Los Angeles, CA
 Plymouth, IN
 Salem, OR
 Dallas, TX

Engineering Support Team:
 1-888-753-7446

PART NO. MP-LSM	PAGE 2 OF 2
DWG. NO. MP-LSM	

PARTS LIST						
ITEM	QTY	PART NO.	PART DESCRIPTION	LENGTH	UNIT WT.	NET WT.
1	6	X--LP42	ANGLE ADAPTER		6.64	39.86
2	6	G58R-48	5/8" x 48" THREADED ROD (HDG.)	48 in	4.18	25.09
3	12	G58112	5/8" x 1-1/2" HDG BOLT	1 1/2 in	0.25	2.97
4	24	G58LW	5/8" HDG LOCKWASHER		0.03	0.63
5	24	G58NUT	5/8" HDG HEAVY 2H HEX NUT		0.13	3.12
TOTAL WT. #						71.66



TOLERANCE NOTES

**TOLERANCES ON DIMENSIONS, UNLESS OTHERWISE NOTED ARE:
 SAWED, SHEARED AND GAS CUT EDGES ($\pm 0.030"$)
 DRILLED AND GAS CUT HOLES ($\pm 0.030"$) - NO CONING OF HOLES
 LASER CUT EDGES AND HOLES ($\pm 0.010"$) - NO CONING OF HOLES
 BENDS ARE $\pm 1/2$ DEGREE
 ALL OTHER MACHINING ($\pm 0.030"$)
 ALL OTHER ASSEMBLY ($\pm 0.060"$)**

**PROPRIETARY NOTE:
 THE DATA AND TECHNIQUES CONTAINED IN THIS DRAWING ARE PROPRIETARY INFORMATION OF VALMONT
 INDUSTRIES AND CONSIDERED A TRADE SECRET. ANY USE OR DISCLOSURE WITHOUT THE CONSENT OF
 VALMONT INDUSTRIES IS STRICTLY PROHIBITED.**

DESCRIPTION
**LARGE POLE ADAPTER
 MINI RING MOUNT
 (28" TO 42" DIA)**

SITE PRO 1
 Engineering Support Team:
 1-888-753-7446
 Locations:
 New York, NY
 Atlanta, GA
 Los Angeles, CA
 Plymouth, IN
 Salem, OR
 Dallas, TX

CPD NO. N/A	DRAWN BY BMC 12/20/2010	ENG. APPROVAL
CLASS 81	SUB 01	DRAWING USAGE CUSTOMER
CHECKED BY RCH		DATE 2/4/2011

PART NO. LP-42	PAGE 1 OF 1
DWG. NO. LP-42	

A	LP-42 PUT ON NEW TITLE BLOCK	KC	4/27/2012
REV	DESCRIPTION OF REVISIONS	CPD	BY
REVISION HISTORY			